



**NAVAL  
POSTGRADUATE  
SCHOOL**

**MONTEREY, CALIFORNIA**

Characterization of Marine Mammal Recordings from  
the Hawaii Range Complex

by

**Simone Baumann-Pickering, Lisa K. Baldwin, Anne E. Simonis, Marie A.  
Roche, Mariana L. Melcon, John A. Hildebrand, Erin M. Oleson, Robin W.  
Baird, Gregory S. Schorr, Daniel L. Webster, and Daniel J. McSweeney**

November 2010

**Approved for public release; distribution is unlimited.**

Prepared for: CNO(N45), Washington, D.C.

THIS PAGE INTENTIONALLY LEFT BLANK

NAVAL POSTGRADUATE SCHOOL  
Monterey, California 93943-5000

Daniel T. Oliver  
President

Leonard A. Ferrari  
Executive Vice President and  
Provost

This report was prepared for and funded by CNO(N45), Washington, D.C. The report was prepared by the Scripps Institution of Oceanography, Pacific Islands Fisheries Science Center, Cascadia Research Collective, and Wild Whale Research Foundation supported under NPS Grant N00244-08-1-0028.

Reproduction of all or part of this report is authorized.

This report was prepared by:

---

Simone Baumann-Pickering

---

Lisa K. Baldwin

---

Anne E. Simonis

---

Marie A. Roch

---

Mariana L. Melcon

---

John A. Hildebrand

---

Erin M. Oleson

---

Robin W. Baird

---

Gregory S. Schorr

---

Daniel L. Webster

---

Daniel J. McSweeney

Reviewed by:

Released by:

---

Jeffrey Paduan  
Department of Oceanography

---

Karl Van Bibber  
Vice President and Dean of Research

**THIS PAGE INTENTIONALLY LEFT BLANK**

<b>REPORT DOCUMENTATION PAGE</b>			<i>Form Approved</i> <i>OMB No. 0704-0188</i>	
Public reporting burden for this collection of information is estimated to average 1 hour per response, including the time for reviewing instructions, searching existing data sources, gathering and maintaining the data needed, and completing and reviewing this collection of information. Send comments regarding this burden estimate or any other aspect of this collection of information, including suggestions for reducing this burden to Department of Defense, Washington Headquarters Services, Directorate for Information Operations and Reports (0704-0188), 1215 Jefferson Davis Highway, Suite 1204, Arlington, VA 22202-4302. Respondents should be aware that notwithstanding any other provision of law, no person shall be subject to any penalty for failing to comply with a collection of information if it does not display a currently valid OMB control number. <b>PLEASE DO NOT RETURN YOUR FORM TO THE ABOVE ADDRESS.</b>				
<b>1. REPORT DATE (DD-MM-YYYY)</b> November 2010		<b>2. REPORT TYPE</b> Technical Report	<b>3. DATES COVERED (From - To)</b> 17 June 2009 – 31 May 2010	
<b>4. TITLE AND SUBTITLE</b> Characterization of Marine Mammal Recordings from the Hawaii Range Complex			<b>5a. CONTRACT NUMBER</b> N00244-08-1-0028	
			<b>5b. GRANT NUMBER</b>	
			<b>5c. PROGRAM ELEMENT NUMBER</b>	
<b>6. AUTHOR(S)</b> Simone Baumann-Pickering, Lisa K. Baldwin, Anne E. Simonis, Marie A. Roche, Mariana L. Melcon, John A. Hildebrand, Erin M. Oleson, Robin W. Baird, Gregory S. Schorr, Daniel L. Webster, and Daniel J. McSweeney			<b>5d. PROJECT NUMBER</b>	
			<b>5e. TASK NUMBER</b>	
			<b>5f. WORK UNIT NUMBER</b>	
<b>7. PERFORMING ORGANIZATION NAME(S) AND ADDRESS(ES)</b> 1) Scripps Institution of Oceanography, UCSD, La Jolla, CA 92093 2) Pacific Islands Fisheries Science Center, NOAA, Honolulu, HI 96822 3) Cascadia Research Collective, Olympia, WA 98501 4) Wild Whale Research Foundation, Holualoa, HI 96725			<b>8. PERFORMING ORGANIZATION REPORT NUMBER</b>	
<b>9. SPONSORING / MONITORING AGENCY NAME(S) AND ADDRESS(ES)</b> <u>Sponsoring Agency:</u> CNO (N45), Washington, DC <u>Monitoring Agency:</u> Dept. of Oceanography, Naval Postgraduate School Monterey, CA			<b>10. SPONSOR/MONITOR'S ACRONYM(S)</b> Sponsor: CNO (N45) Monitor: NPS	
			<b>11. SPONSOR/MONITOR'S REPORT NUMBER(S)</b> NPS-OC-10_004CR	
<b>12. DISTRIBUTION / AVAILABILITY STATEMENT</b> Approved for public release; distribution is unlimited.				
<b>13. SUPPLEMENTARY NOTES</b> The views expressed in this reports are those of the authors and do not reflect the official policy or position of the Department of Defense or the US Government.				
<b>14. ABSTRACT</b> This report summarizes work conducted in FY2009-FY2010 to characterize marine mammal sounds related to passive acoustic monitoring in the Hawaii Range Complex. Existing acoustic data from the Complex were analyzed to provide better descriptions of acoustic signals by species. Recordings were from a boat-based hydrophone or an autonomous bottom-moored High-frequency Acoustic Recording Package (HARP). Recordings were made of pygmy killer whales, melon-headed whales, Risso's dolphins, and rough-toothed dolphins. Echolocation click parameters were calculated for single species recordings during visual and acoustic surveys by boat-based hydrophones, and by using sightings from small boat surveys and locations of satellite tagged individuals near the HARP. Automatic classification of echolocation clicks of false killer whales and short-finned pilot whales was performed using a Gaussian mixture model. An analyst manually screened the HARP data collected off the west coast of Hawaii during the period ii/10/2009-iii/9/2009. Distinct call types were found for: beaked whales with frequency modulated upsweep echolocation pulses; sperm whales; high frequency clicks of unknown origin; low frequency banded echolocation clicks; and a large number of unidentified echolocation clicks. Odontocetes were acoustically active every day. Beaked whales were detected on 41% of recording days, but only briefly each day.				
<b>15. SUBJECT TERMS</b> Marine mammals, sound, acoustics, Hawaii Range Complex, HARP, passive acoustic monitoring, odontocetes, beaked whales, pygmy killer whales, melon-headed whales, Risso's dolphins, rough-toothed dolphins, echolocation clicks, sperm whales.				
<b>16. SECURITY CLASSIFICATION OF:</b> Unclassified			<b>17. LIMITATION OF ABSTRACT</b>  UU	<b>18. NUMBER OF PAGES</b>  50
<b>a. REPORT</b> Unclassified	<b>b. ABSTRACT</b> Unclassified	<b>c. THIS PAGE</b> Unclassified		
			<b>19b. TELEPHONE NUMBER (include area code)</b>	

THIS PAGE INTENTIONALLY LEFT BLANK

## Contents

LIST OF FIGURES	ii
LIST OF TABLES	iv
TITLE PAGE	1
EXECUTIVE SUMMARY	2
I) DESCRIPTION OF ACOUSTIC SIGNALS BY SPECIES	3
1) <i>Echolocation click parameters of confirmed species</i>	5
2) <i>Automatic classification of echolocation clicks of false killer whales and short-finned pilot whales</i>	14
3) <i>Echolocation clicks of unknown origin</i>	14
II) ACOUSTIC DETECTIONS OF MARINE MAMMALS FROM HARP	16
1) <i>Manual acoustic detections</i>	16
2) <i>Automatic acoustic detections</i>	19
III) CLASSIFICATION AND CHARACTERIZATION OF ANTHROPOGENIC NOISE	28
ACKNOWLEDGEMENTS	32
REFERENCES	32
INITIAL DISTRIBUTION LIST	34

## List of Figures

Figure 1:	Location of the High-frequency Acoustic Recording Package (HARP).	5
Figure 2:	Location of visual sightings of short-finned pilot whales (triangles) and rough-toothed dolphins (diamond) near the HARP (star).	7
Figure 3:	Location of satellite tagged false killer whales (hexagons) near the HARP (star).	7
Figure 4:	Echolocation clicks of <b>I</b> ) false killer whales, <b>II</b> ) short-finned pilot whales, <b>III</b> ) pygmy killer whales, <b>IV</b> ) melon-headed whales, <b>V</b> ) rough-toothed dolphins, and <b>VI</b> ) Risso's dolphins. <b>A</b> ) Distribution of peak frequency, <b>B</b> ) Concatenated spectrogram sorted by peak frequency with frequency over click number and spectrum level coded in color, <b>C</b> ) Mean spectra (solid line) and mean noise (dashed line) with relative spectrum level over frequency.	10-13
Figure 5:	Distribution of error rates for automatic classification of echolocation clicks of false killer whales (Pc) and short-finned pilot whales (Gm). <b>A</b> ) Overall error rate, <b>B</b> ) Error rate detailed for Pc and Gm.	14
Figure 6:	Example of high frequency clicks of unknown origin.	15
Figure 7:	Notable banding pattern in echolocation clicks.	15
Figure 8:	Manual detection of <b>A</b> ) All beaked whale echolocation pulses with frequency modulated (FM) upsweep, <b>B</b> ) FM pulses, known from Cross Seamount, Hawaii, <b>C</b> ) Sperm whale echolocation clicks, <b>D</b> ) High frequency clicks of unknown origin (figure 6), <b>E</b> ) Low frequency, banded echolocation clicks (figure 7), and <b>F</b> ) Unidentified odontocete echolocation clicks.	17-18
Figure 9:	Automatic detections of echolocation clicks of all odontocete species during deployment <b>A</b> ) Hawaii 01, <b>B</b> ) Hawaii 02, <b>C</b> ) Hawaii 05, and <b>D</b> ) Hawaii 06.	21-23
Figure 10:	Automatic detections of beaked whale echolocation pulses during deployment <b>A</b> ) Hawaii 01, <b>B</b> ) Hawaii 02, <b>C</b> ) Hawaii 03, <b>D</b> ) Hawaii 05, and <b>E</b> ) Hawaii 06.	24-26

Figure 11:	Distribution of number of consecutive days with beaked whale detections.	26
Figure 12:	Distribution of automatic detections of beaked whale echolocation pulses versus time of day during deployment <b>A)</b> Hawaii 01, <b>B)</b> Hawaii 02, <b>C)</b> Hawaii 03, <b>D)</b> Hawaii 05, and <b>E)</b> Hawaii 06.	27
Figure 13:	Manual detection of anthropogenic noise in Hawaii 05. <b>A)</b> Echosounders with main frequency at 28 kHz, <b>B)</b> Echosounders 30 kHz., <b>C)</b> Echosounders 50 kHz, and <b>D)</b> Ship engine noise.	29-30
Figure 14:	Power spectral densities of 80 hours of recordings per plot. Data from Hawaii 05 time period <b>A)</b> 2/9/2009, 0140 h-2/13/2009, 0920 h, <b>B)</b> 2/13/2009, 0921 h-2/16/2009, 1844 h, <b>C)</b> 2/16/2009, 1845 h-2/20/2009, 0730 h, <b>D)</b> 2/20/2009, 0731 h-2/23/2009, 1331 h, <b>E)</b> 2/23/2009, 1332 h-2/26/2009, 2255 h, <b>F)</b> 2/26/2009, 2256 h-3/2/2009, 0819 h, <b>G)</b> 3/2/2009,0820 h-3/5/2009, 1742 h, and <b>H)</b> 3/5/2009, 1743 h-3/9/2009, 0306 h.	31

### **List of Tables**

Table 1:	HARP deployment cycles off the west coast of the island of Hawaii.	4
Table 2:	Echolocation click parameters.	8-9
Table 3:	Manual detections of marine mammal species and anthropogenic sound sources during February 10, 2009, until March 9, 2009.	19
Table 4:	Automatic detection of echolocation clicks of all odontocetes and beaked whale pulses during five HARP deployments.	21

**Marine Physical  
Laboratory**



of the Scripps Institution  
of Oceanography  
University of California,  
San Diego

**California Institute of Technology**

**Contract # 28H-1087365**

**June 17, 2009 – May 31, 2010**

**Submitted to:**

**Naval Postgraduate School**

**Characterization of Marine Mammal Recordings  
from the Hawaii Range Complex**

**Principal Investigator: John Hildebrand**

**Marine Physical Laboratory**

**Scripps Institution of Oceanography**

**Contract Number: 28H-1087365**

**Project Title: Marine Mammal Monitoring for the Hawaii Range Complex (HRC)**

**Project Duration: June 17, 2009 – May 31, 2010**

## **Executive Summary**

This report summarizes work conducted in FY2009-FY2010 with Navy support to characterize marine mammal sounds related to passive acoustic monitoring in the Hawaii Range Complex (HRC). Existing acoustic data from the Hawaii Range Complex area were analyzed to provide better descriptions of acoustic signals by species. Recordings were either from a boat-based hydrophone during small boat-based surveys, or from an autonomous bottom-moored High-frequency Acoustic Recording Package (HARP). Recordings were made of pygmy killer whales (*Feresa attenuata*) during four encounters, melon-headed whales (*Peponocephala electra*) during three encounters, Risso's dolphins (*Grampus griseus*) during one encounter, and rough-toothed dolphins (*Steno bredanensis*) during one encounter. Echolocation click parameters were calculated for single species recordings during visual and acoustic surveys by boat-based hydrophones, as well as by using sightings from small boat surveys and locations of satellite tagged individuals in the vicinity of the HARP. False killer whales and short-finned pilot whales had the lowest peak frequencies (15-21 kHz) in comparison to the other species. Pygmy killer whale echolocation clicks showed a bimodal distribution of peak frequencies (in the range of 35 to 50 kHz or 75 to 100 kHz). Melon-headed whales had peak frequency in the range of 31 to 35 kHz. Risso's dolphins showed a distinct peak/notch frequency structure in their echolocation clicks. (Peaks appear at 24.5, 26.7, 34.6 and 40.3 kHz.) Automatic classification of echolocation clicks of false killer whales and short-finned pilot whales was performed using a Gaussian mixture model. This method resulted in a mean misclassification of  $10.7 \pm 0.7\%$ . Two unknown but distinct echolocation click types were observed in the HARP data. One was a high frequency click that had its minimum frequency around 70 kHz and extended beyond the frequency range of the recorder (100 kHz). The other click type was a low frequency click that had a distinct banding pattern with peak structure at 12.2, 16.4 and 23.8 kHz, close to the peaks seen for short-finned pilot whales.

An acoustic analyst manually screened the HARP data collected off the west coast of the island of Hawaii during the time period of February 10, 2009, until March 9, 2009. Distinct call types were found for: beaked whales with frequency modulated upsweep echolocation pulses (particularly those previously noted at Cross Seamount); sperm whales; high frequency clicks of unknown origin; low frequency banded echolocation clicks; and a large number of unidentified echolocation clicks. Odontocetes were acoustically active every day of the recording period. (65% of total hours had echolocation clicks.) Beaked whales were detected on 41% of the recording days, but only during short periods per day (4% of total hours). Events of anthropogenic noise were logged and categorized as ship noise or echosounder.

# Characterization of Marine Mammal Recordings from the Hawaii Range Complex

**Simone Baumann-Pickering, Lisa K. Baldwin, Anne E. Simonis, Marie A. Roch, Mariana L. Melcon, John A. Hildebrand**

Scripps Institution of Oceanography, UCSD, La Jolla, CA 92093-0205

**Erin M. Oleson**

Pacific Islands Fisheries Science Center, NOAA, Honolulu, Hawaii 96822

**Robin W. Baird, Gregory S. Schorr, Daniel L. Webster**

Cascadia Research Collective, 218 ½ W. 4<sup>th</sup> Avenue, Olympia, Washington 98501

**Daniel J. McSweeney**

Wild Whale Research Foundation, Box 139, Holualoa, Hawaii 96725

## I) Descriptions of acoustic signals by species

Acoustic recordings of cetaceans were obtained either with an autonomous bottom-moored High-frequency Acoustic Recording Package (HARP) deployed off the island of Hawaii (Wiggins and Hildebrand 2007) or with a boat-based hydrophone during several small boat-based field projects undertaken off the island of Hawaii (see Baird *et al.* 2008a). The boat-based hydrophone system (sampling frequency of 192 kHz) was deployed opportunistically when in the presence of a single species of cetacean, typically at distances of less than 100 m from the animals and positioned such that the animals were likely to pass within 50 m of the hydrophone. Species present were confirmed both visually and with photographs. The HARP was deployed in approximately 620 m of water (19° 34.8 N 156° 00.9 W, figure 1) in an area that has been regularly surveyed during small boat field projects since 2002 and is known to be an area where a wide diversity of odontocetes is found (Baird *et al.* 2008a, 2008b, 2009, 2010; McSweeney *et al.* 2007, 2009; Schorr *et al.* 2009a, 2009b). The HARP was recording either continuously or on an intermittent schedule with five minutes of recordings in 8 or 15 minute intervals (Table 1). Information on cetacean presence in the vicinity of the HARP, to confirm species recorded acoustically, was obtained in one of two ways. During small boat-based field efforts the area around the HARP was surveyed periodically, typically with the vessel stopping at the location and making 360° scans with binoculars, to assess whether any cetaceans were at the survey in the area. In addition, individuals of a number of species were tagged with location-only satellite tags (see Schorr *et al.* 2009a, 2009b; Baird *et al.* 2010) and tracked with the ARGOS satellite system. The distance from all filtered locations (see Schorr *et al.* 2009a) to the HARP location was measured using the Posdist<sup>1</sup> function in Excel, and consecutive satellite locations that spanned the HARP site (indicating an animal passing the HARP location) or were within 2 km of the HARP were used to assess acoustic detection from the HARP recordings.

---

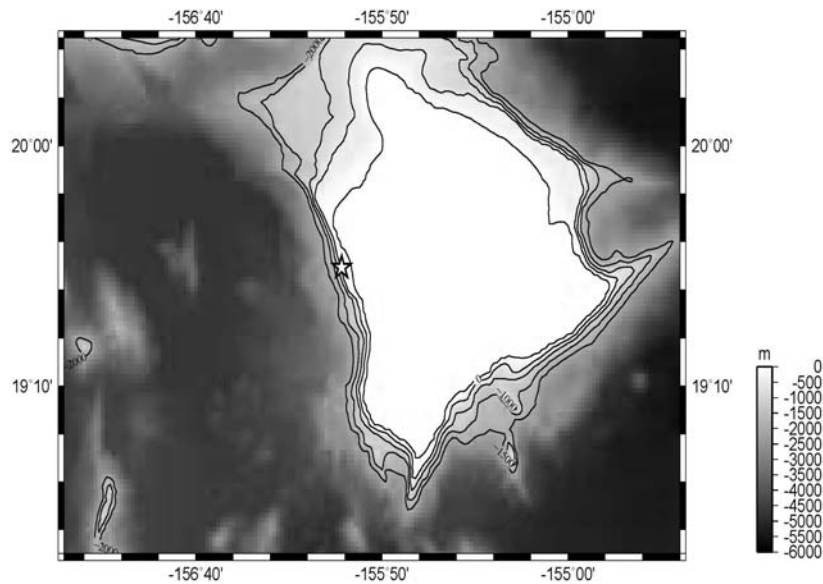
<sup>1</sup>Available from <http://www.afsc.noaa.gov/nmml/software/excelgeo.php>.

**Table 1: HARP deployment cycles off the west coast of the island of Hawaii. Duty cycle: cont. = continuous, recording time/recording interval in minutes.**

	<b>Start</b>	<b>End</b>	<b>Duty cycle</b>	<b># hour bins</b>	<b># daily bins</b>
Hawaii 01	08/ 11/2007, 0000 hours	10/04/2007, 0616 hours	cont.	1302	55
Hawaii 02	04/19/2008, 0600 hours	07/04/2008, 1419 hours	5/8	1832	77
Hawaii 03	07/ 08/2008, 0000 hours	10/15/2008, 2048 hours	5/15	2396	100
Hawaii 05	02/10/2009, 0000 hours	03/09/2009, 0615 hours	cont.	654	28
Hawaii 06	04/23/2009, 1000 hours	8/18/2009, 1748 hours	5/15	2815	118

Recordings with the boat-based hydrophone were obtained from pygmy killer whales (*Feresa attenuata*) during four encounters, melon-headed whales (*Peponocephala electra*) during four encounters (two from the Hawaii resident population and two from the Main Hawaiian Islands population; see Aschettino 2010), Risso’s dolphins (*Grampus griseus*) during one encounter, and rough-toothed dolphins (*Steno bredanensis*) during one encounter (Table 2).

Three visual sightings of short-finned pilot whales (*Globicephala macrorhynchus*) and one sighting of rough-toothed dolphins occurred in close proximity to the recording HARP (figure 2). Three satellite tagged false killer whales (*Pseudorca crassidens*) from the Hawaii insular population were repeatedly in the area around the HARP. Seven satellite positions were close enough to the HARP that acoustic detections during that time period were likely corresponding with vocalizations of these animals (figure 3), which resulted in four time periods with false killer whale echolocation click periods on HARP recordings.



**Figure 1:** Location of the High-frequency Acoustic Recording Package (HARP) indicated with a star on the west coast of the island of Hawaii, position 19° 34.8 N, 156° 00.9 W.

## 1) *Echolocation click parameters of confirmed species*

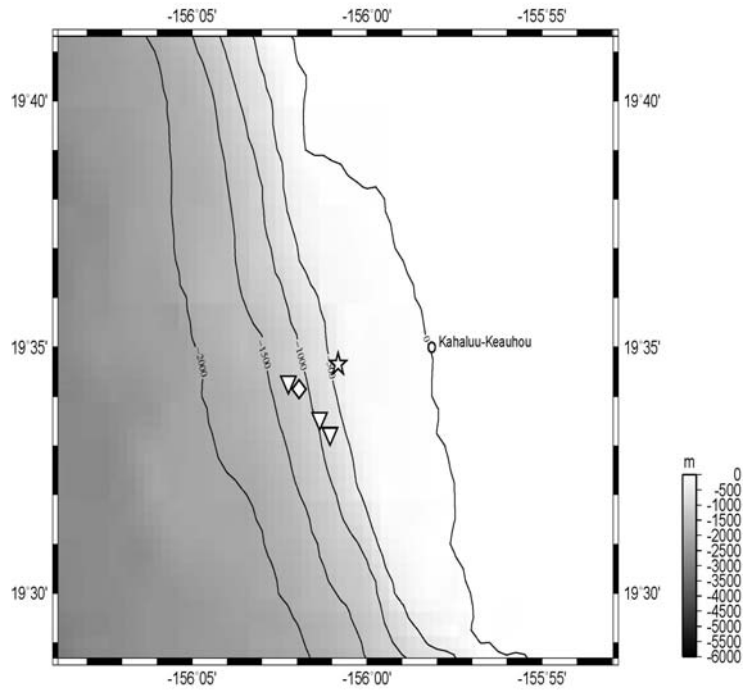
Echolocation clicks were analyzed and described in detail for future species classification by their acoustic signals. Echolocation click parameters have been calculated for all single species recorded during boat-based surveys as well as when satellite tagged or visually sighted species were in the vicinity of the HARP and recordings were made (Table 2).

False killer whales and short-finned pilot whales had the lowest peak and center frequencies in comparison to the other species (Table 2, figure 4). Their overall appearances of all clicks (figure 4/I+IIB) as well as their mean spectra of all clicks (figure 4/I+IIC) were very similar. Possible features for discrimination were a slightly broader distribution of peak frequencies for short-finned pilot whales (figure 4/I+IIA) and their potentially species-specific peaks at 12.6, 18.8 and 28.2 kHz (figure 4/IIC). Whether these peaks are consistent for this species will have to be verified with further single species recordings. The only other species we know of so far which might produce echolocation clicks that are also in this frequency range would be killer whales and Baird's beaked whales. Killer whales are rare in Hawaiian waters (Baird *et al.* 2006), and Baird's beaked whales have not been documented in Hawaii. Both should be different in the spectral structure of their echolocation clicks. Therefore, sequences on the autonomous HARP data with peak frequencies in the range of 15-21 kHz are most often of false killer whale or short-finned pilot whale origin.

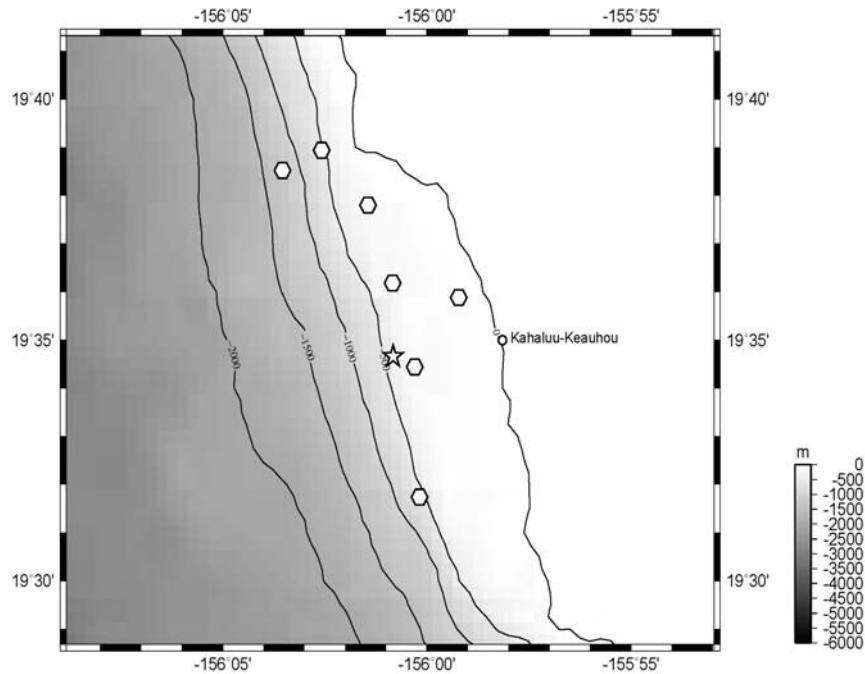
Pygmy killer whale echolocation clicks showed a bimodal distribution of peak frequencies (figure 4/IIIA-C). Clicks had their peak frequency either in the range of 35 to 50 kHz or 75 to 100 kHz. Clicks with low peak frequency also had low amplitude (figure 4/IIIB), which was either due to the distance or, more likely, the angle of the animal to the recording hydrophone. A similar correlation has previously been demonstrated by Madsen *et al.* (2004).

Melon-headed whales had their peak frequency in the range of 31 to 35 kHz (Table 2, figure 4/IV). This was higher than known from a previous study at Palmyra Atoll (Baumann-Pickering, 2009), where the peak frequency was around 25-29 kHz. Recordings in Hawaii were made from two different populations, one of which is resident to the island of Hawaii and the other that moves throughout the main Hawaiian Islands and into offshore waters (Aschettino 2010), and it is possible there may be population-level differences between them that will be investigated at a future date when more recordings are available. Rough-toothed dolphins and melon-headed whales are probably difficult to discriminate (Table 2, figure 4/V). No further efforts have been made to classify these signals automatically.

Risso's dolphins showed a very distinct peak/notch frequency structure in their echolocation clicks (figure 4/VI). The peaks appear in the mean spectra at 24.5, 26.7, 34.6 and 40.3 kHz (figure 4/VIC). These values differ from values reported for Risso's dolphins in Southern California, where the peaks lie at 22.1, 25.6, 30.3 and 39.0 kHz (Soldevilla *et al.*, 2008).



**Figure 2:** Location of visual sightings of short-finned pilot whales (triangles) and rough-toothed dolphins (diamond) near the HARP (star).



**Figure 3:** Location of satellite tagged false killer whales (hexagons) near the HARP (star). In most cases, tagged false killer whales were transiting alongshore and groups were typically spread inshore and offshore (Baird *et al.* 2010). Thus, whales in the group likely passed close to the HARP.

**Table 2:** Echolocation click parameters. Values are given as medians followed by first and third quartiles in brackets. n= number of clicks.

	<b>Peak Frequency (kHz)</b>	<b>Center Frequency (kHz)</b>	<b>Duration (ms)</b>	<b>Inter-click Interval (ms)</b>	<b>Bandwidth -10dB (kHz)</b>	<b>Bandwidth -3dB (kHz)</b>
<b>I) False killer whale</b>						
<b>HARP Hawaii 7.26.08</b> (n=2,738 )	15.2 [13.2 17.5]	18.5 [16.5 22.0]	0.21 [0.17 0.28]	198 [66 484]	18.3 [14.0 23.8]	8.5 [6.2 10.9]
<b>HARP Hawaii 7.27.08</b> (n= 3,089)	16.7 [14.0 17.9]	20 [17.5 23.0]	0.23 [0.18 0.30]	82 [24 258]	19.5 [13.2 27.3]	8.5 [5.8 11.3]
<b>HARP Hawaii 8.1.08</b> (n=3,010)	16.4 [14.0 19.1]	19.5 [17.2 23.7]	0.23 [0.17 0.32]	352 [121.3 853.5]	16.4 [11.3 22.2]	7.4 [5.4 10.5]
<b>HARP Hawaii 8.16.08</b> (n=4,536)	17.1 [14.0 19.9]	20.2 [17.7 24.9]	0.24 [0.18 0.32]	150 [48.4 390.1]	18.3 [12.1 26.1]	8.2 [5.8 10.5]
<b>II) Short-finned pilot whale</b>						
<b>HARP Hawaii 8.25.07</b> (n=1,374)	17.5 [13.2 19.9]	21.8 [14.5 28.9]	0.37 [0.23 0.56]	179 [52.3 245]	11.7 [7.4 18.7]	5 [3.9 7.8]
<b>HARP Hawaii 5.01.08</b> (n=3,428)	19.1 [15.2 20.3]	22.8 [20.0 26.8]	0.32 [0.20 0.47]	184 [99.1 241.9]	11.3 [7.8 17.5]	5 [4.2 7.0]
<b>HARP Hawaii 5.15.08</b> (n=4,863)	20.7 [15.2 27.7]	24.7 [21.1 28.5]	0.32 [0.22 0.45]	188.7 [97.3 244.8]	16.7 [10.1 23.8]	6.25 [4.6 8.9]
<b>III) Pygmy killer whale</b>						
<b>array Hawaii 4.24.08</b> (n=534)	84 [73.1 88.1]	65 [59.0 69.2]	0.3 [0.23 0.63]	75.6 [37.2 137.9]	52.5 [22.5 64.5]	10.5 [5.5 16.5]
<b>array Hawaii 12.06.08</b> (n=1263)	82 [48.3 87.3]	65 [58.0 69.3]	0.2 [0.17 0.25]	55 [39.0 102.0]	52.5 [34.5 63]	12.7 [7.8 17.6]
<b>array Hawaii 12.09.08</b> (n=127)	36 [25.1 44.6]	38 [31.4 49.4]	0.2 [0.18 0.35]	404 [10.8.6 2734]	36 [19.8 45.7]	14 [6.7 18]
<b>array Hawaii 4.20.09</b> (n=648)	47.2 [42.3 79.5]	56.4 [50.0 63.8]	0.2 [0.15 0.29]	99 [70.4 158.6]	62.6 [42.3 71.6]	17.6 [14.6 22.5]

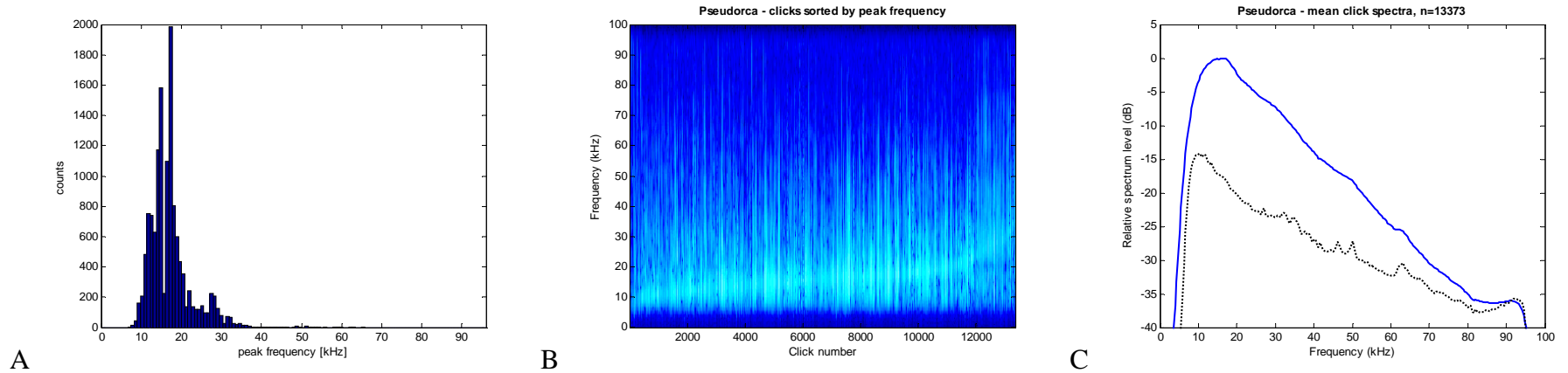
**Table 2 continued: Echolocation click parameters.** Values are given as medians followed by first and third quartiles in brackets. n= number of clicks.

	<b>Peak Frequency (kHz)</b>	<b>Center Frequency (kHz)</b>	<b>Duration (ms)</b>	<b>Inter-click Interval (ms)</b>	<b>Bandwidth -10dB (kHz)</b>	<b>Bandwidth -3dB (kHz)</b>
<b>IV) Melon-headed whale</b>						
<b>array Hawaii 4.25.08</b> (n=125)	34.5 [20.6 50.43]	43.9 [36.1 50.0]	0.29 [0.20 0.41]	173.3 [98.1 326.2]	24.7 [12.3 33.3]	9 [5.1 11.8]
<b>*array Hawaii 12.10.08</b> (n=6,985)	34.1 [25.5 43.8]	38.6 [33.9 47.9]	0.37 [0.26 0.54]	23 [11.8 53.6]	24.3 [13.1 33.3]	7.8 [4.8 12.3]
<b>array Hawaii 12.15.08</b> (n=2,361)	31.1 [25.1 40.1]	36.2 [31.9 43.1]	0.32 [0.21 0.49]	24 [12.4 52.5]	25.1 [16.1 32.2]	9.37 [5.9 13.5]
<b>V) Rough-toothed dolphin</b>						
<b>HARP Hawaii 7.12.08</b> (n=4013)	25 [21.8 33.9]	30 [26.3 33.5]	0.18 [0.14 0.23]	130 [72.1 241.4]	37 [26.1 44.1]	13.2 [8.2 20.7]
<b>array Hawaii 5.01.09</b> (n=329)	34 [26.6 43.9]	37 [31.6 43.9]	0.27 [0.19 0.38]	155 [95.0 332.0]	28.1 [22.1 35.2]	11.2 [7.7 14.2]
<b>VI) Risso's dolphin</b>						
<b>array Hawaii 4.27.09</b> (n=221)	43.8 [41.9 52.5]	56 [50.3 60.5]	0.32 [0.20 0.64]	209 [129.5 470.9]	21.7 [10.5 39.3]	5.6 [3.7 10.5]

\* Two encounters from a single day are combined.

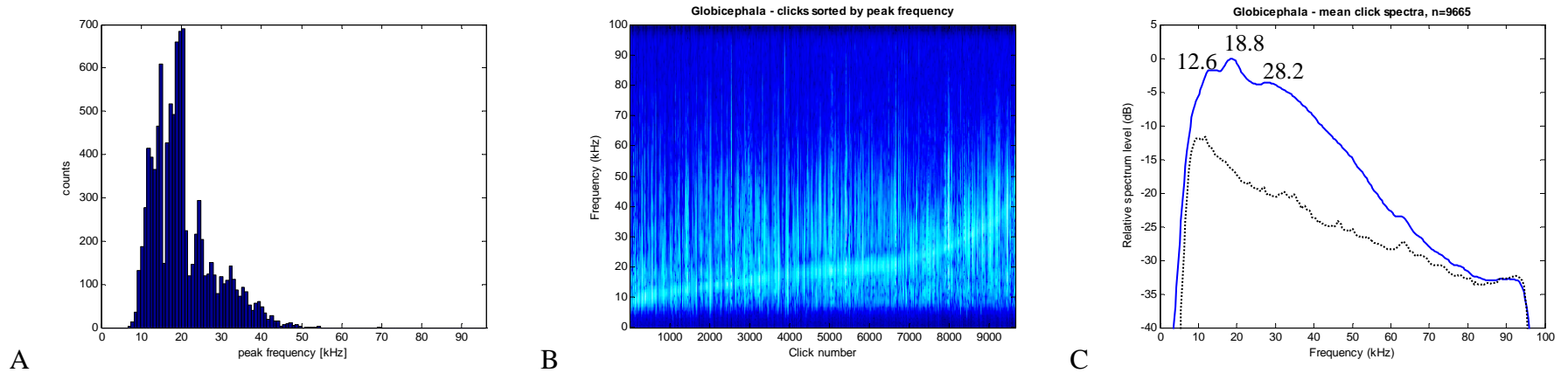
I) False killer whale (*Pseudorca crassidens*)

HARP



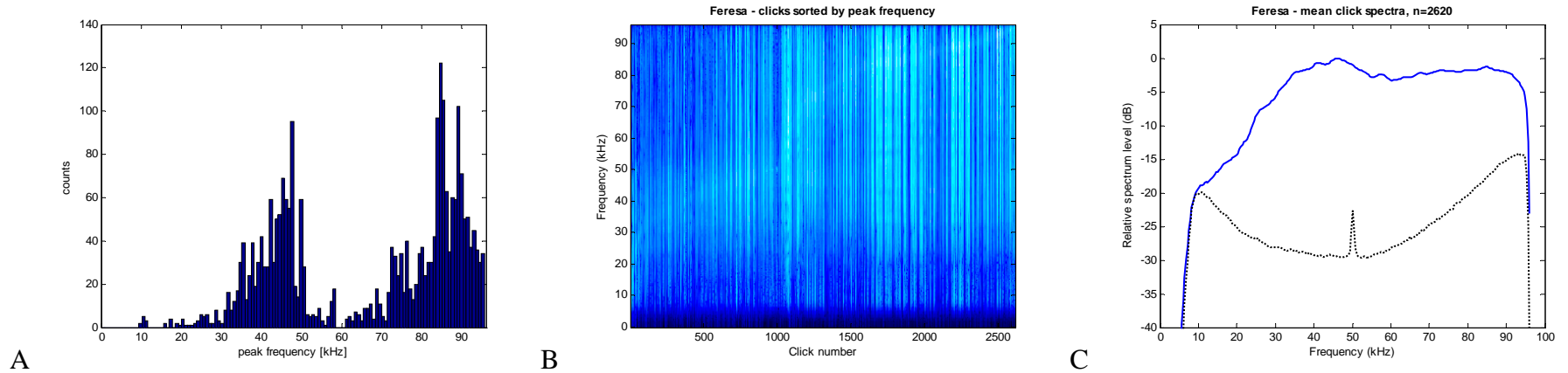
II) Short-finned pilot whale (*Globicephala macrorhynchus*)

HARP

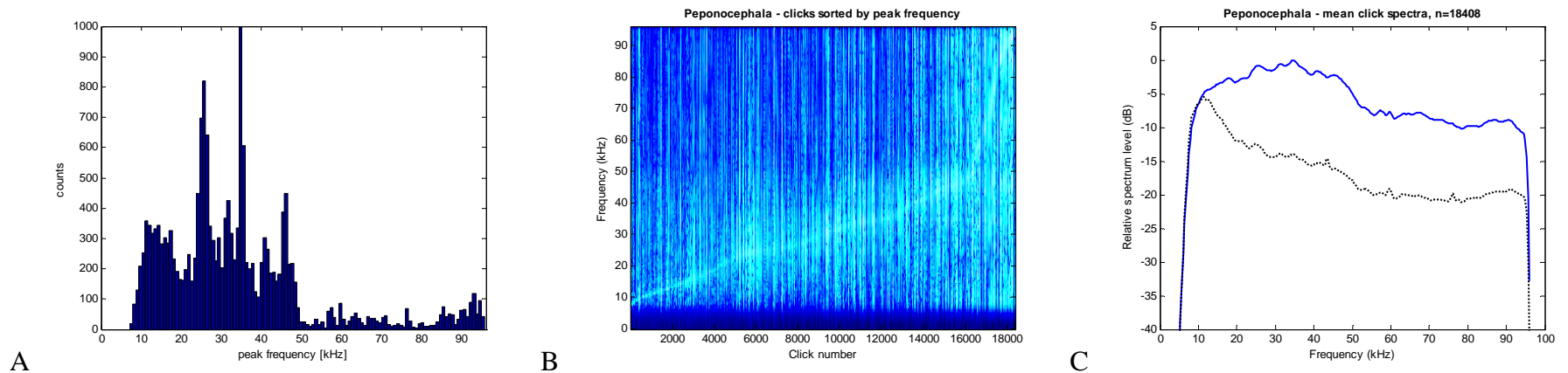


**Figure 4:** Echolocation clicks of I) false killer whales, II) short-finned pilot whales, III) pygmy killer whales, IV) melon-headed whales, V) rough-toothed dolphins, and VI) Risso's dolphins. A) Distribution of peak frequency, B) Concatenated spectrogram sorted by peak frequency with frequency over click number and spectrum level coded in color, C) Mean spectra (solid line) and mean noise (dashed line) with relative spectrum level over frequency.

III) Pygmy killer whale (*Feresa attenuata*)  
Boat-based hydrophone

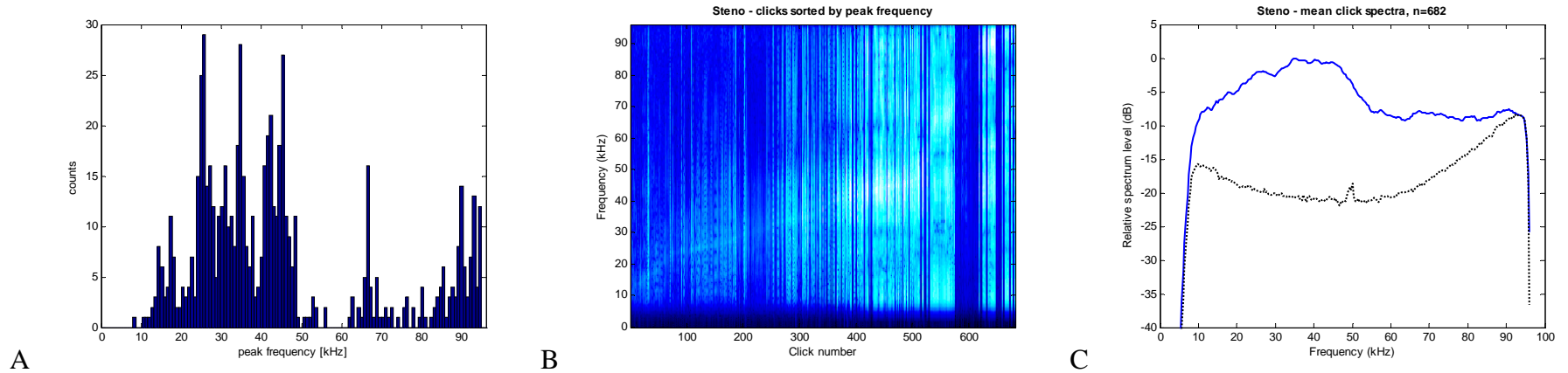


IV) Melon-headed whale (*Peponocephala electra*)  
Boat-based hydrophone

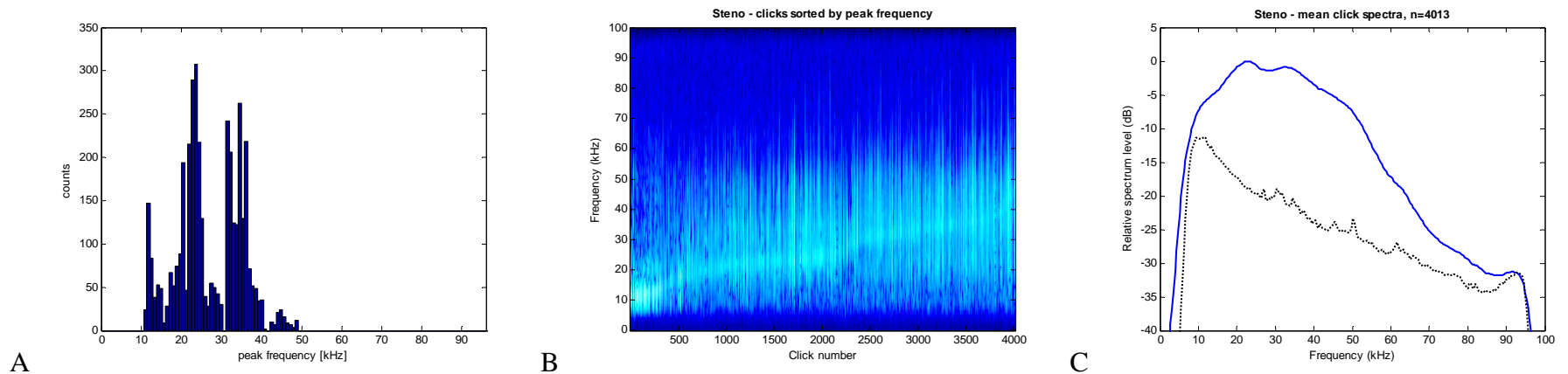


**Figure 4 continued:** Echolocation clicks of I) false killer whales, II) short-finned pilot whales, III) pygmy killer whales, IV) melon-headed whales, V) rough-toothed dolphins, and VI) Risso's dolphins. A) Distribution of peak frequency, B) Concatenated spectrogram sorted by peak frequency with frequency over click number and spectrum level coded in color, C) Mean spectra (solid line) and mean noise (dashed line) with relative spectrum level over frequency.

V) Rough-toothed dolphin (*Steno bredanensis*)  
Boat-based hydrophone

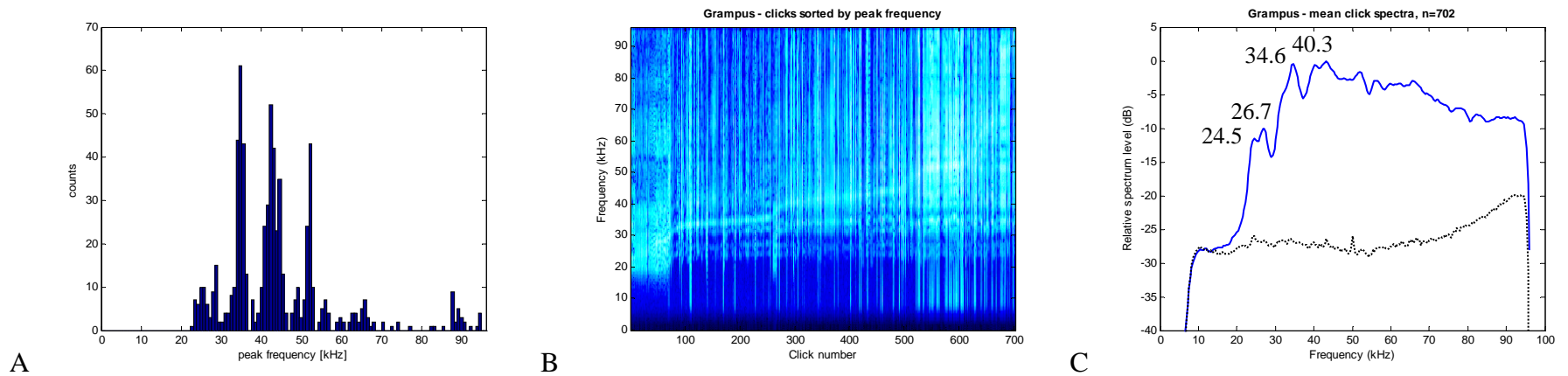


HARP



**Figure 4 continued:** Echolocation clicks of I) false killer whales, II) short-finned pilot whales, III) pygmy killer whales, IV) melon-headed whales, V) rough-toothed dolphins, and VI) Risso's dolphins. A) Distribution of peak frequency, B) Concatenated spectrogram sorted by peak frequency with frequency over click number and spectrum level coded in color, C) Mean spectra (solid line) and mean noise (dashed line) with relative spectrum level over frequency.

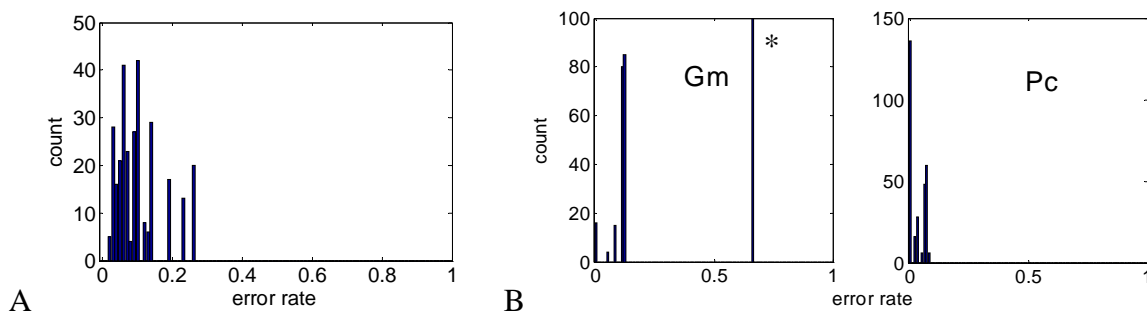
VI) Risso's dolphin (*Grampus griseus*)  
Boat-based hydrophone



**Figure 4 continued:** Echolocation clicks of I) false killer whales, II) short-finned pilot whales, III) pygmy killer whales, IV) melon-headed whales, V) rough-toothed dolphins, and VI) Risso's dolphins. A) Distribution of peak frequency, B) Concatenated spectrogram sorted by peak frequency with frequency over click number and spectrum level coded in color, C) Mean spectra (solid line) and mean noise (dashed line) with relative spectrum level over frequency.

## 2) Automatic classification of echolocation clicks of false killer whales and short-finned pilot whales

Automatic classification of echolocation clicks of false killer whales and short-finned pilot whales was performed using a Gaussian mixture model (Roch *et al.*, 2008) with a 3-fold test, 100 experiments, 16 mixtures, and 200 consecutive clicks grouped as coming from the same species. This resulted in a mean error rate of misclassification of  $10.7 \pm 0.7\%$ , and a median error rate of 9.3%. When looking at the falsely classified data more closely, there appeared to be one particular HARP recording of short-finned pilot whales (figure 5) that had more than 60% misclassifications in all experiments. We will have to increase our sample size to evaluate if this is an irregularity caused by recording a visually undetected species (e.g., false killer whales).



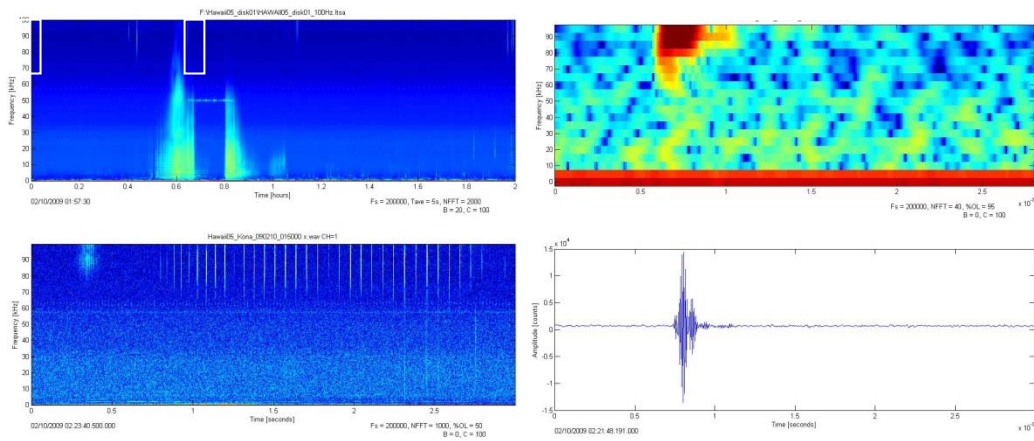
**Figure 5:** Distribution of error rates for automatic classification of echolocation clicks of false killer whales (Pc) and short-finned pilot whales (Gm). A) Overall error rate, B) error rate detailed for Pc and Gm.

\* indicates dataset with highest incorrect classification in all experiments.

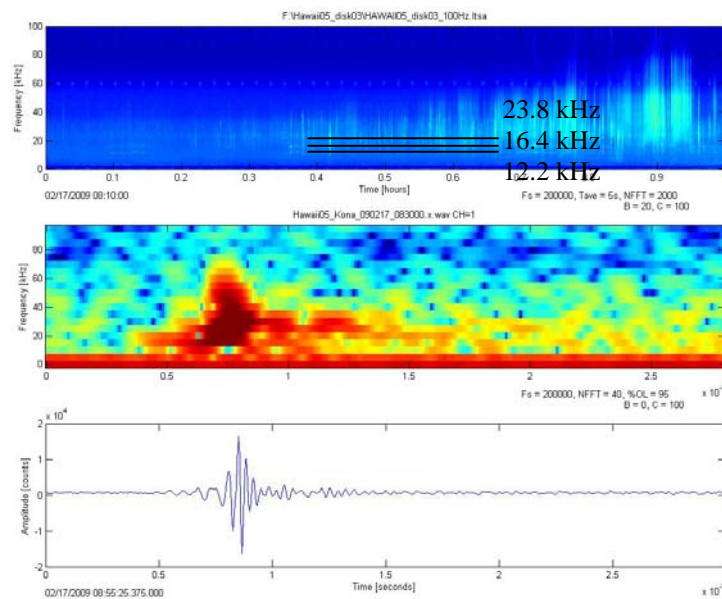
## 3) Echolocation clicks of unknown origin

Two distinct echolocation click types were notable in the long-term autonomous HARP data. One click type was a high frequency click that had its lowest frequency around 70 kHz and was extending beyond the frequency range of the recorder (figure 6). The example click has in its time series and spectrogram a hint of a sweep, indicating a possible beaked whale species of unknown kind. Data with a higher sampling rate would show this more clearly.

The other click type was a low frequency click that had a distinct banding pattern, with peak structure at 12.2, 16.4 and 23.8 kHz (figure 7). This banding appears to be very close to the peaks reported for short-finned pilot whales above (figure 4/IIC), with peaks at 12.6, 18.8 and 28.2 kHz. Further data need to be gathered of single species encounters or tagged animals to strengthen this hypothesis.



**Figure 6:** Example of high frequency clicks of unknown origin. Top left: Long-term spectral average of 2 hours of data. White boxes indicate areas of interest. Bottom left: spectrogram of 3 seconds. Right: Example click in detail, with top spectrogram and bottom time series.



**Figure 7:** Notable banding pattern in echolocation clicks. Top: Long-term spectral average of 1 hour. Banding pattern in echolocation clicks, frequencies indicated by horizontal lines. Center spectrogram and bottom time series of example echolocation click.

## **II) Acoustic detections of marine mammals from HARP**

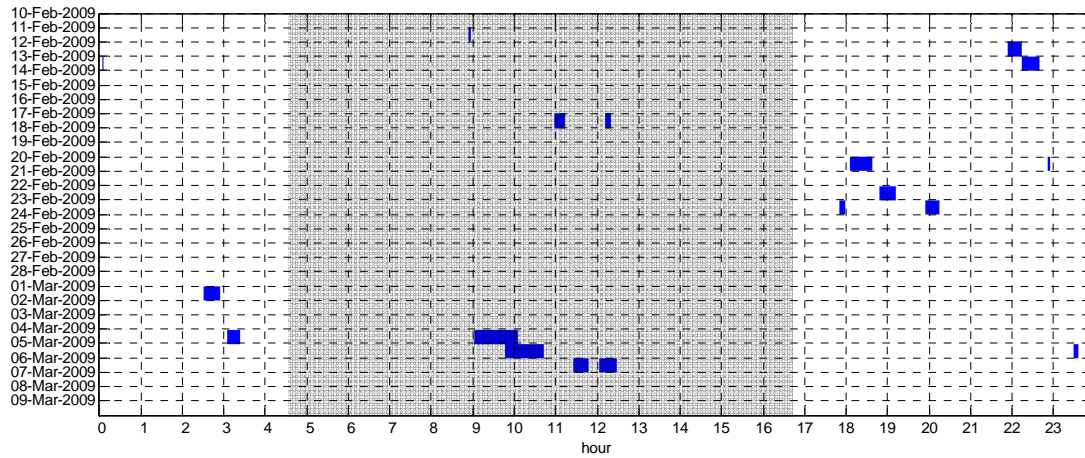
### **1) *Manual acoustic detections***

A trained analyst manually screened the HARP data collected off the west coast of the island of Hawaii (figure 1) during the time period of February 10, 2009, 0000 hours GMT, until March 9, 2009, 0615 hours GMT (deployment Hawaii 05, Table 1). A MATLAB based software package called *TRITON* was used for data display and event logging. Potential sound events detected in a one-hour or shorter spectrogram were investigated at finer temporal scales to identify the origin of the sound by species or type of anthropogenic sound. Start and end of a distinct vocalization period were marked.

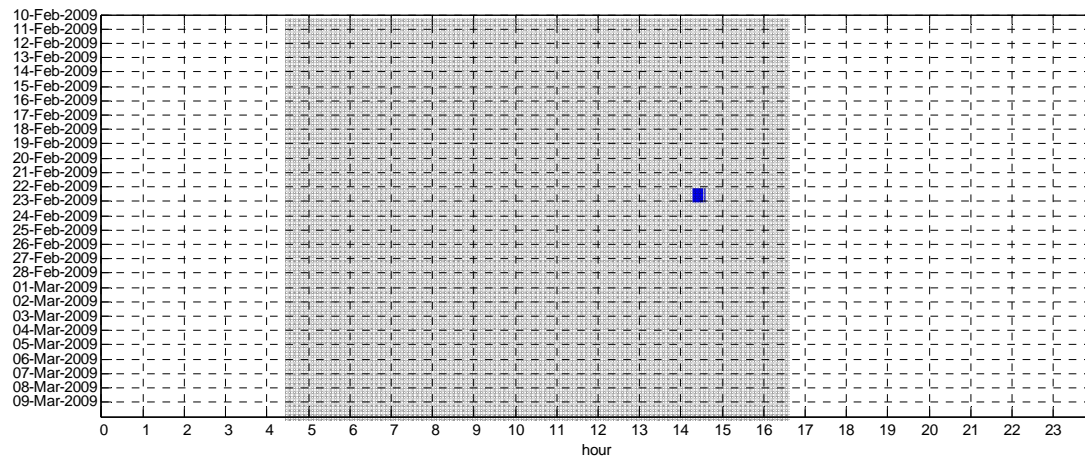
Distinct call types were found for: beaked whales with their frequency modulated upsweep echolocation pulses (figure 8A), particularly those first noted at Cross Seamount (McDonald *et al.*, 2009) (figure 8B); sperm whales (figure 8C); high frequency clicks of unknown origin (figure 8D, described in figure 6); and low frequency, banded echolocation clicks (figure 8E, described in figure 7). Additionally, a large number of echolocation clicks originating from unidentified odontocetes were noted that could not be attributed to a certain species or a distinct call type (figure 8F).

Odontocetes were acoustically active every day of the recording period, with approximately 65% of total hours with echolocation click activity (Table 3). Beaked whales were detected on 41% of the recording days, yet only during short periods per day, resulting in about 4% of total hours with beaked whale echolocation pulses (Table 3). Low frequency, banded clicks (figure 7) were noted with similar regularity.

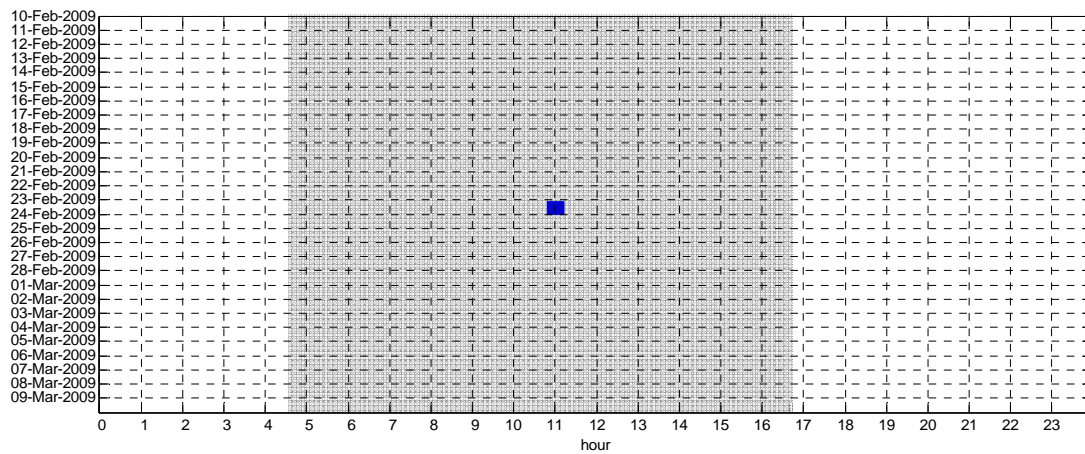
# Marine Mammal Recordings from the Hawaii Range Complex



A: Beaked Whale spp.

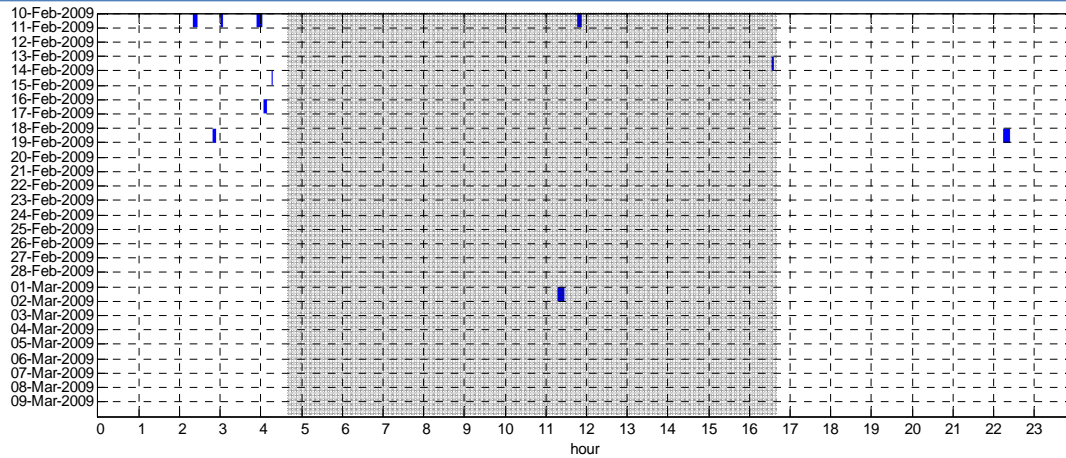


B: Frequency modulated upswEEP, first reported from Cross Seamount, Hawaii (McDonald *et al.*, 2009).

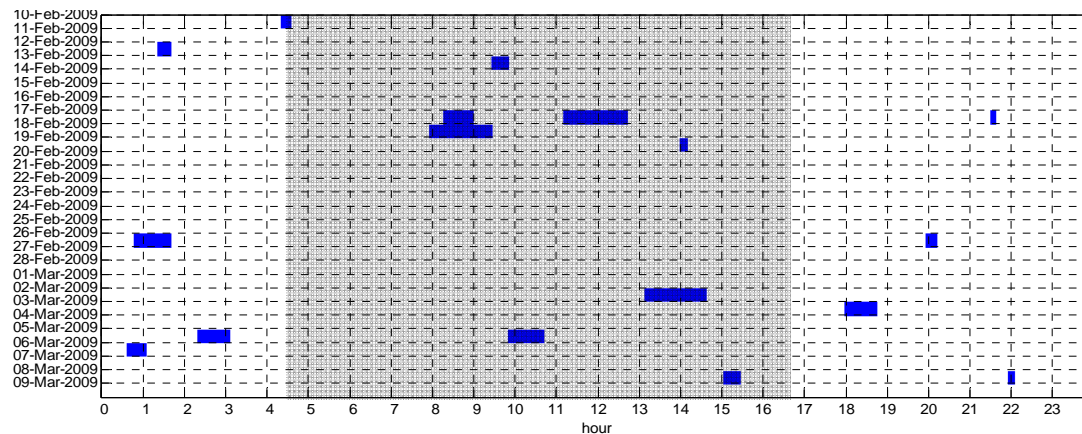


C: Sperm whale

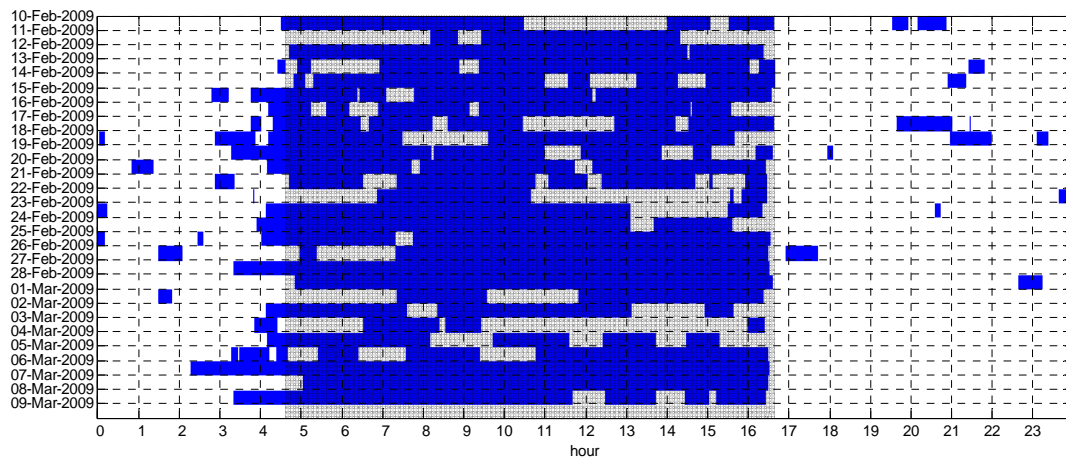
**Figure 8:** Manual detections of A) All beaked whale echolocation pulses with frequency modulated (FM) upswEEP, B) FM pulses, known from Cross Seamount, Hawaii, C) Sperm whale echolocation clicks, D) High frequency clicks of unknown origin (figure 6), E) Low frequency, banded echolocation clicks (figure 7), and F) Unidentified odontocete echolocation clicks. Time is given in GMT, local approximate night time indicated with grey background.



D: High frequency echolocation clicks



E: Low frequency, banded echolocation clicks



F: Unidentified odontocete echolocation clicks

**Figure 8 continued:** Manual detections of A) All beaked whale echolocation pulses with frequency modulated (FM) upsweep, B) FM pulses, known from Cross Seamount, Hawaii, C) Sperm whale echolocation clicks, D) High frequency clicks of unknown origin (figure 6), E) Low frequency, banded echolocation clicks (figure 7), and F) Unidentified odontocete echolocation clicks. Time is given in GMT, local approximate night time indicated with gray background.

**Table 3: Manual detections of marine mammal species and anthropogenic sound sources during February 10, 2009, until March 9, 2009.**

	# hour bins	percent	# day bins	percent
<b>Marine mammal sounds</b>				
Beaked whale spp.	23	3.5%	11	40.7%
Cross Seamount beaked whale	1	0.2%	1	3.7%
Sperm whale	1	0.2%	1	3.7%
High frequency clicks (figure 6)	10	1.5%	6	22.2%
Low frequency clicks (figure 7)	26	4.0%	12	44.4%
Clicks of other odontocete spp.	361	55.2%	27	100.0%
<b>Anthropogenic sounds</b>				
25 kHz echosounder	5	0.8%	3	11.1%
28.8 kHz echosounder	39	6.0%	12	44.4%
30 kHz echosounder	83	12.7%	19	70.4%
33 kHz echosounder	4	0.6%	2	7.4%
43 kHz echosounder	1	0.2%	1	3.7%
50 kHz echosounder	362	55.4%	27	100.0%
80 kHz echosounder	5	0.8%	4	14.8%
ship engine noise	464	70.9%	27	100.0%

## 2) Automatic acoustic detections

An automatic routine in Matlab detected odontocete clicks (method described in Soldevilla *et al.*, 2008) and subsequently classified frequency modulated clicks as of beaked whale origin. The classifier was an expert system, which screened 75-s segments of data as a unit and evaluated the temporal and spectral parameters of detected clicks within each segment. A detailed description of the classification procedure is currently under preparation for publication.

The detector is capable of detecting all FM pulses currently known for beaked whales in the Pacific Islands region, namely Blainville's beaked whale (*Mesoplodon densirostris*), Cuvier's beaked whale (*Ziphius cavirostris*), signals known from an unknown species at Palmyra Atoll (possibly *Mesoplodon hotaula*, Baumann-Pickering *et al.*, 2010), and an unknown species at Cross Seamount (McDonald *et al.*, 2009). The detector was verified for missed and false detections for the manually screened time period described above (section II/1). It detected 51 segments with beaked whale vocalizations, out of which 6 segments were misclassified, resulting in a 12% false detection rate. There were a total of 28 beaked whale sequences detected. A sequence was defined as a series of echolocation activity of undefined length with gaps not longer than 10 minutes. The detector missed 6 of these sequences, resulting in a 21% missed detection rate, the analyst missed 9 of these, resulting in a 32% missed detection rate. From data collected in Southern California on

which the classifier was tested in more detail, it is known that the number of false detections is fairly stable over time. This means that the percentage of false detections will decrease with an increase of beaked whale detections. The number of missed detections is dependent on overall activity. The missed detection rates are higher during periods of high acoustic activity, mostly due to mixed species recordings.

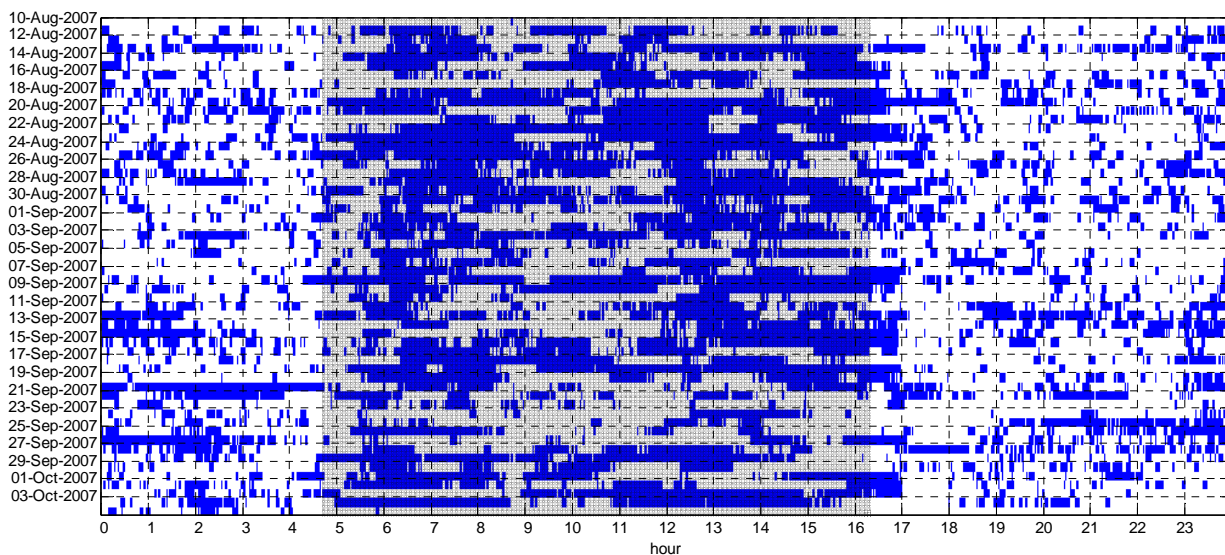
The data automatically analyzed were five deployments of the HARP off the island of Hawaii. The analysis is preliminary, and further evaluation of the outcome will be necessary.

Automatic detections of echolocation clicks of all odontocete species show a higher echolocation activity during nighttime (figure 9). This could be related to a higher foraging activity at night for the two most frequently encountered species of odontocetes in the area, pantropical spotted dolphins and short-finned pilot whales (e.g., Baird *et al.* 2001, 2003). There seems to be an irregularity in the output of the detector, with unexpectedly high numbers of detections starting in Hawaii 02, early June, and all through deployment Hawaii 03 (figure 9B). This irregularity will have to be investigated further. Overall, odontocete echolocation clicks were detected every day of the recording period and during 79 to 96% of hourly bins (Table 4). On average, only deployments Hawaii 01, 05 and 06 taken into account, there were 87% of all hours with detections of echolocation activity.

Beaked whale echolocation pulses were automatically detected throughout the entire recording period (figure 10). Detection rates ranged between 42 and 86% of days with detections and 3 to 9% of hours with detections (Table 4). On average, they were acoustically detectable during 55% of days and 5 % of hourly bins. In most cases beaked whales were detected on one day and not on the next (figure 11). On fewer occasions, between 2 and 19 days of consecutive detections were noted. There did not seem to be a dominant preferred time of the day for vocalizations (figure 12), not surprising, given the lack of diel pattern in deep foraging dives documented for both Cuvier's and Blainville's beaked whales in the area (Baird *et al.* 2008c), and the similar uses of water depths during the day and night by Blainville's beaked whales (Schorr *et al.* 2009a). Only during the very active beaked whale deployment Hawaii 01 was a preference for nighttime activity notable. Echolocation activity appears to be particularly low at the hours of dusk and dawn. In future analysis the beaked whale detections should be investigated more closely to species level. Possibly one species was dominating the detections in Hawaii 01 and showed a preference for vocal activity during a certain time of the day.

**Table 4: Automatic detections of echolocation clicks of all odontocetes and beaked whale pulses during five HARP deployments.**

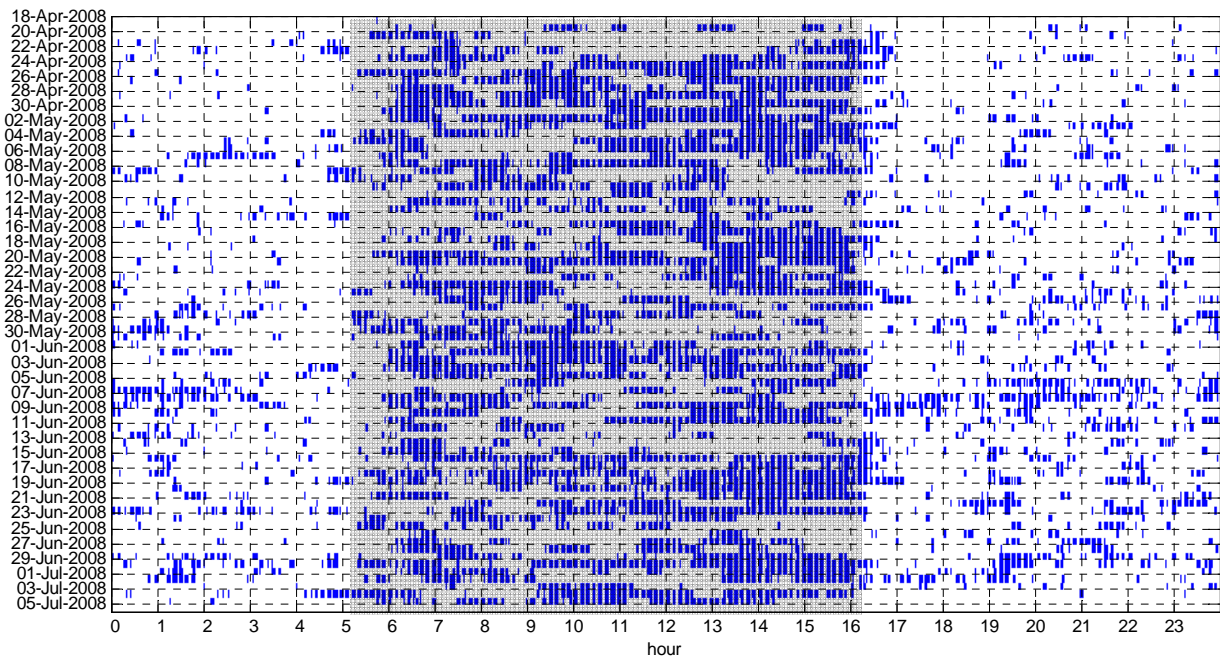
	# hour bins	percent	# day bins	percent
<b>Odontocete detections</b>				
Hawaii 01	1139	87.5%	55	100.0%
Hawaii 02	1455	79.4%	77	100.0%
Hawaii 03	2396	100.0%	100	100.0%
Hawaii 05	628	96.0%	28	100.0%
Hawaii 06	2349	83.4%	118	100.0%
Total (only HI01+05+06)	4116	86.7%	201	100.0%
<b>Beaked whale detections</b>				
Hawaii 01	114	8.8%	47	85.5%
Hawaii 02	95	5.2%	48	62.3%
Hawaii 03	81	3.4%	42	42.0%
Hawaii 05	29	4.4%	15	53.6%
Hawaii 06	107	3.8%	54	45.8%
Total	426	4.7%	206	54.5%



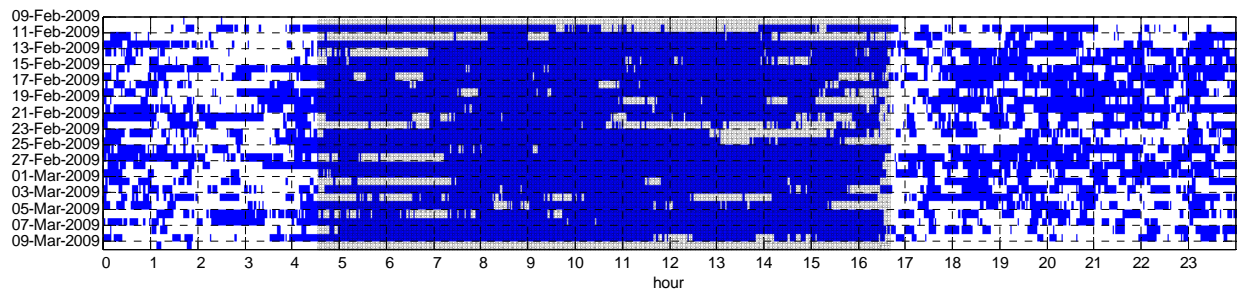
A: Odontocete spp. Hawaii 01, duty cycle continuous

**Figure 9: Automatic detections of echolocation clicks of all odontocete species during deployment A) Hawaii 01, B) Hawaii 02, C) Hawaii 05, and D) Hawaii 06. Time is given in GMT, local approximate nighttime indicated with gray background. Duty cycle is shown as recording time/recording interval in minutes.**

## Marine Mammal Recordings from the Hawaii Range Complex

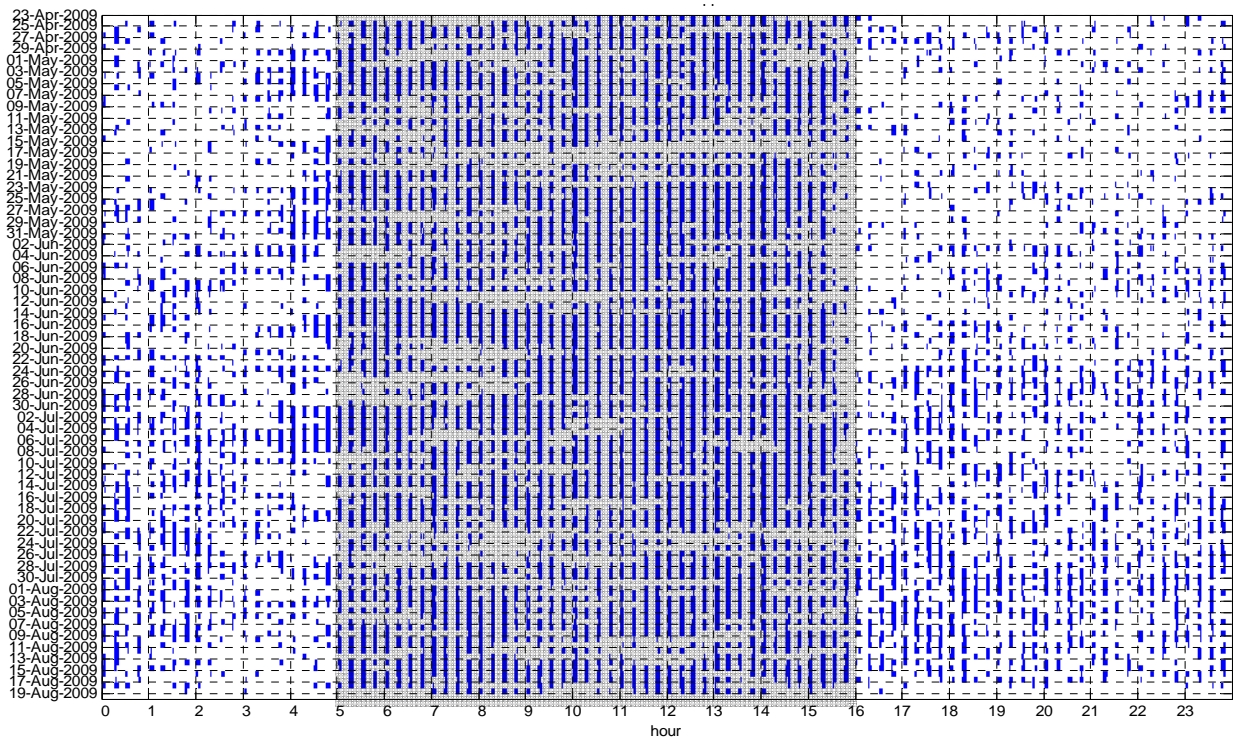


B: Odontocete spp. Hawaii 02, duty cycle 5/8



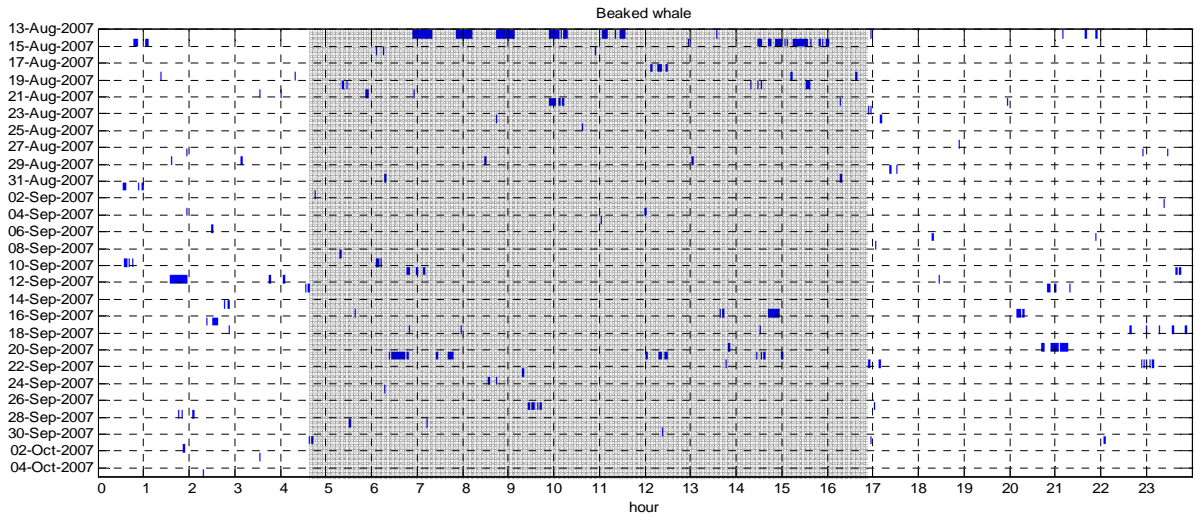
C: Odontocete spp. Hawaii 05, duty cycle continuous

**Figure 9 continued:** Automatic detections of echolocation clicks of all odontocete species during deployment A) Hawaii 01, B) Hawaii 02, C) Hawaii 05, and D) Hawaii 06. Time is given in GMT, local approximate nighttime indicated with gray background. Duty cycle is shown as recording time/recording interval in minutes.

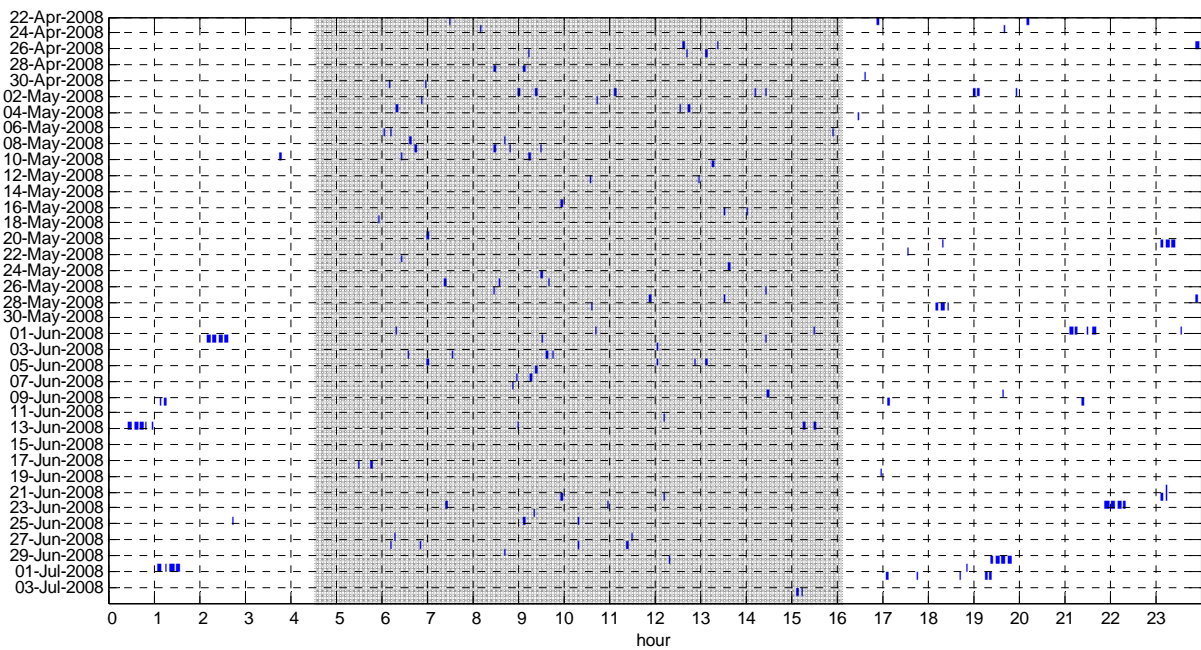


D: Odontocete spp. Hawaii 06, duty cycle 5/15

**Figure 9 continued:** Automatic detections of echolocation clicks of all odontocete species during deployment A) Hawaii 01, B) Hawaii 02, C) Hawaii 05, and D) Hawaii 06. Time is given in GMT, local approximate nighttime indicated with gray background. Duty cycle is shown as recording time/recording interval in minutes.



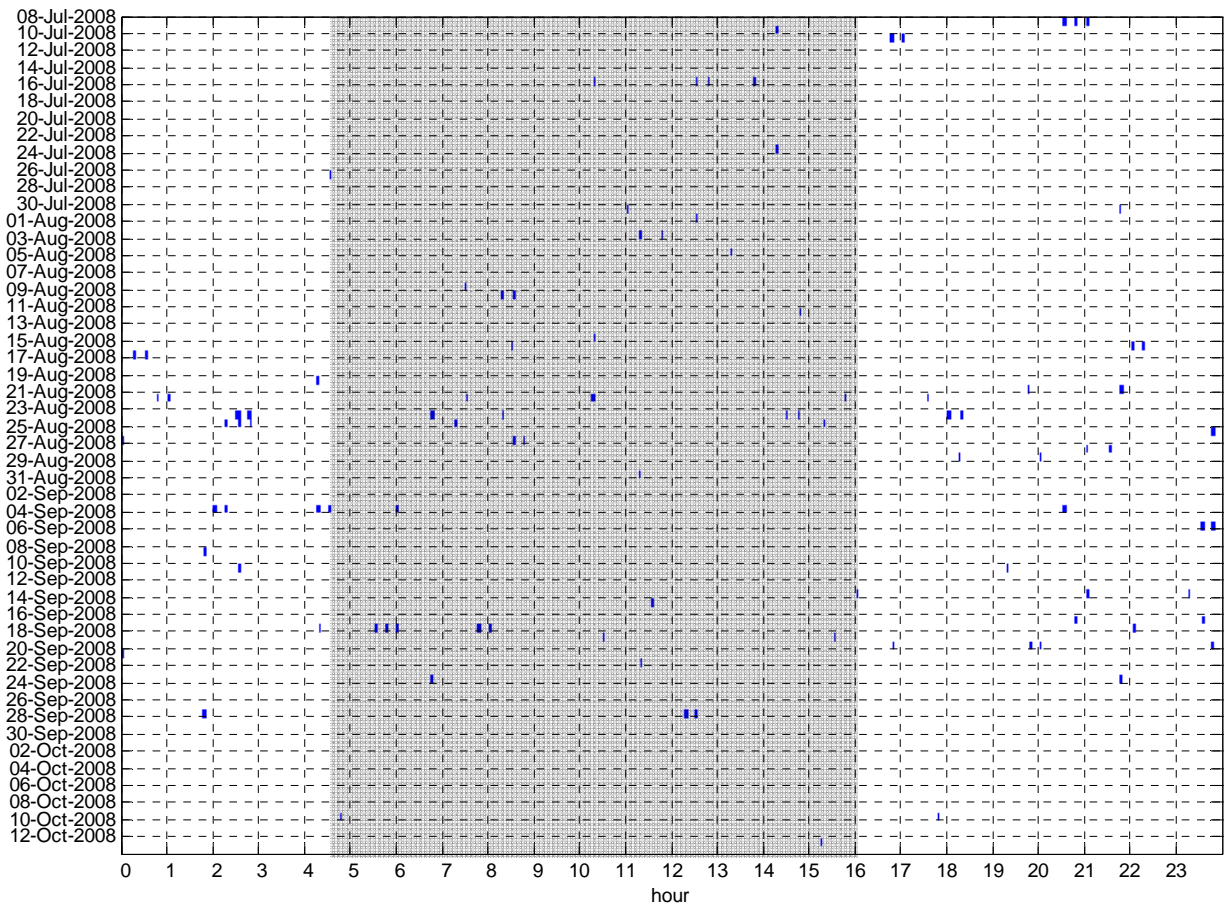
A: Beaked whale Hawaii 01, duty cycle continuous



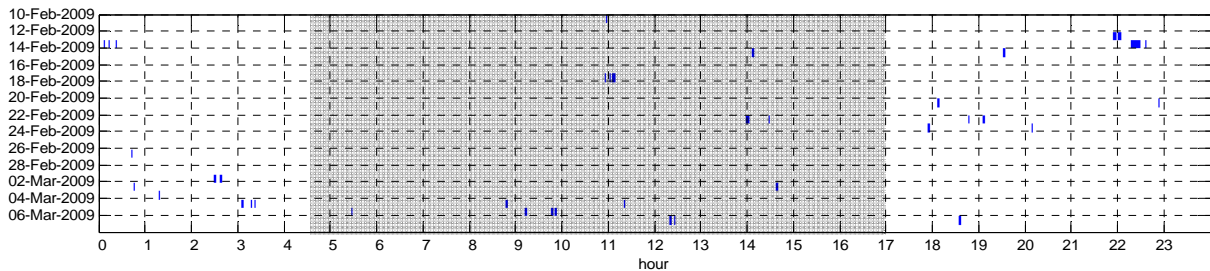
B: Beaked whale Hawaii 02, duty cycle 5/8

**Figure 10:** Automatic detections of beaked whale echolocation pulses during deployment A) Hawaii 01, B) Hawaii 02, C) Hawaii 03, D) Hawaii 05, and E) Hawaii 06. Time is given in GMT, local approximate nighttime indicated with gray background. Duty cycle is shown as recording time/recording interval in minutes.

## Marine Mammal Recordings from the Hawaii Range Complex

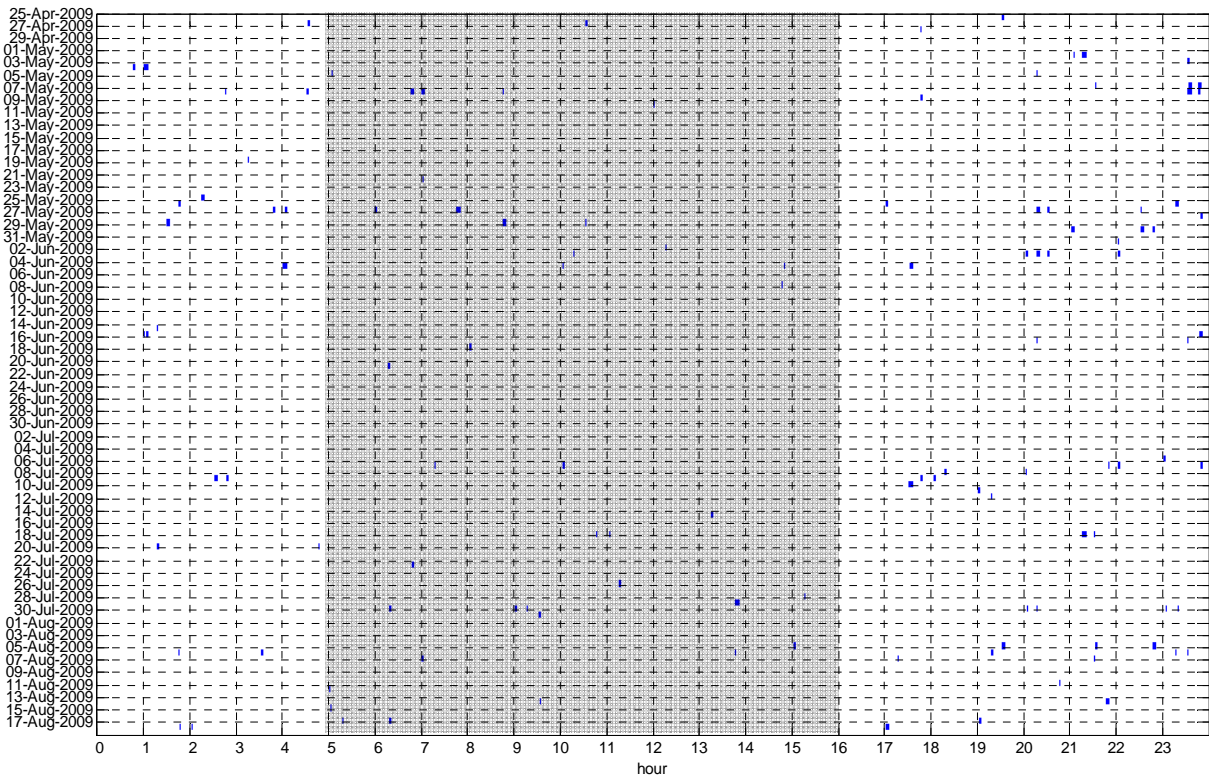


C: Beaked whale Hawaii 03, duty cycle 5/15



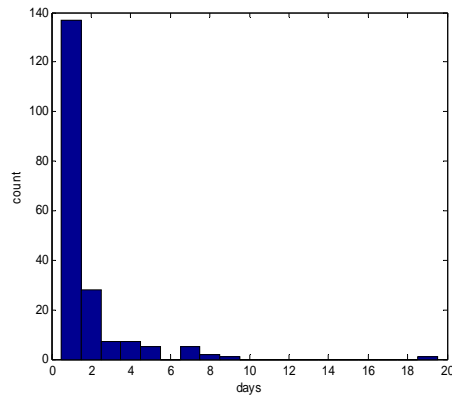
D: Beaked whale Hawaii 05, duty cycle continuous

**Figure 10 continued:** Automatic detections of beaked whale echolocation pulses during deployment A) Hawaii 01, B) Hawaii 02, C) Hawaii 03, D) Hawaii 05, and E) Hawaii 06. Time is given in GMT, local approximate nighttime indicated with gray background. Duty cycle is shown as recording time/recording interval in minutes.

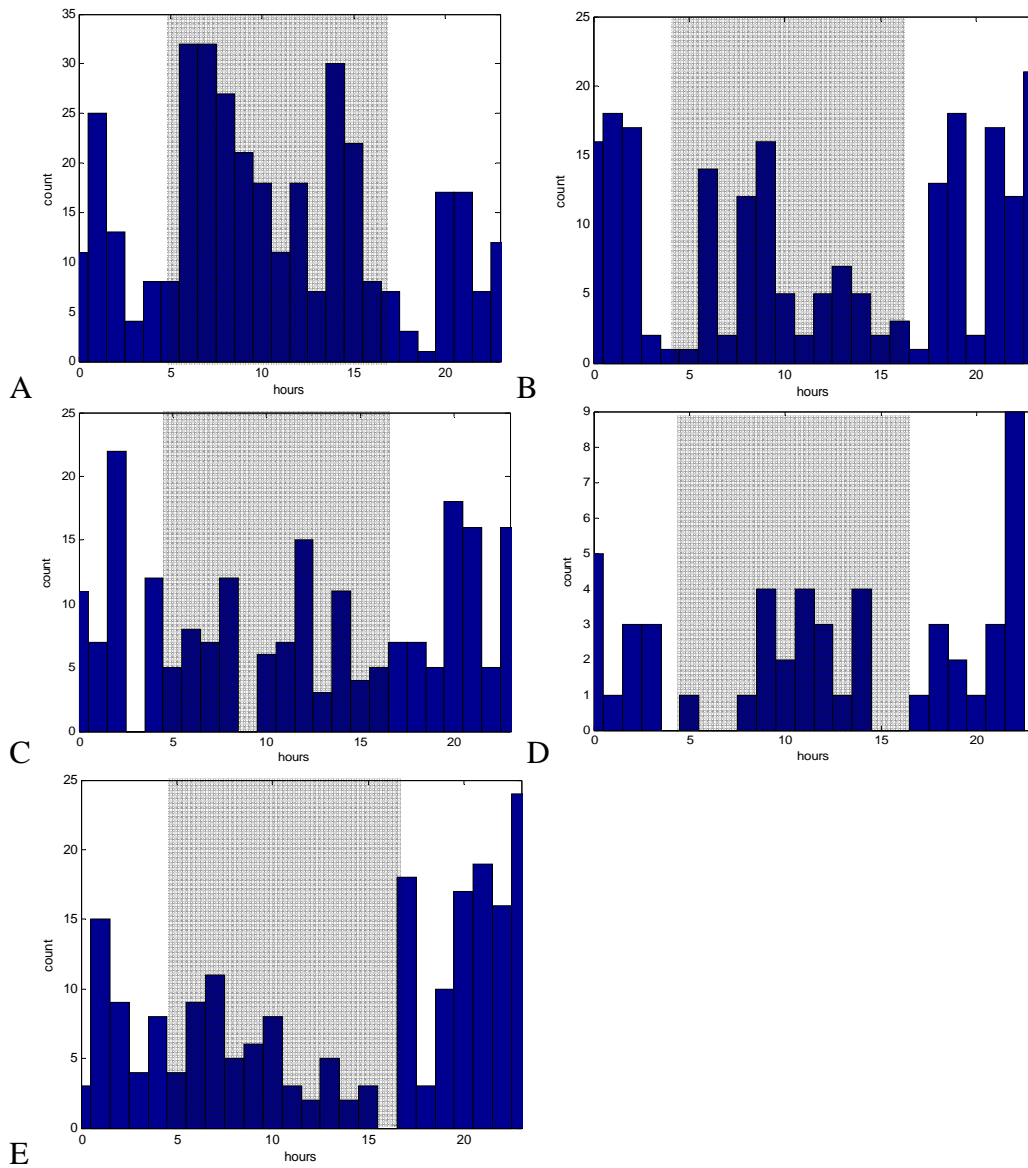


E: Beaked whale Hawaii 06, duty cycle 5/15

**Figure 10 continued:** Automatic detections of beaked whale echolocation pulses during deployment A) Hawaii 01, B) Hawaii 02, C) Hawaii 03, D) Hawaii 05, and E) Hawaii 06. Time is given in GMT, local approximate nighttime indicated with gray background. Duty cycle is shown as recording time/recording interval in minutes.



**Figure 11:** Distribution of number of consecutive days with beaked whale detections



**Figure 12:** Distribution of automatic detections of beaked whale echolocation pulses versus time of day during deployment A) Hawaii 01, B) Hawaii 02, C) Hawaii 03, D) Hawaii 05, and E) Hawaii 06. Counts are 75-s segments with beaked whale pulses. Time is given in GMT, local approximate nighttime indicated with gray background.

### **III) Classification and characterization of anthropogenic noise**

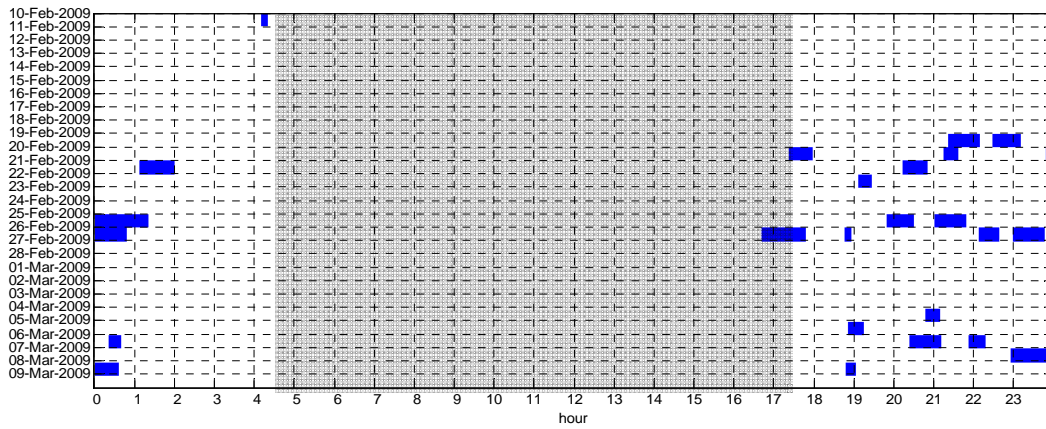
A trained analyst manually screened the HARP data for deployment Hawaii 05 during the time period of February 10, 2009, 0000 hours GMT, until March 9, 2009, 0615 hours GMT. Start and end of an event of human-made noise were logged and assigned to the category of ship (detection of noise caused by the engine) or echosounder.

Given the proximity of the HARP to Honokohau and Kailua Harbors, as well as to a Fish Aggregating Device (the “VV” FAD), it is not surprising that ship noise was detected every day of the time period considered (Table 3, figure 13D). The detections encompassed 71% of the total hourly bins analyzed and were mostly present during the day.

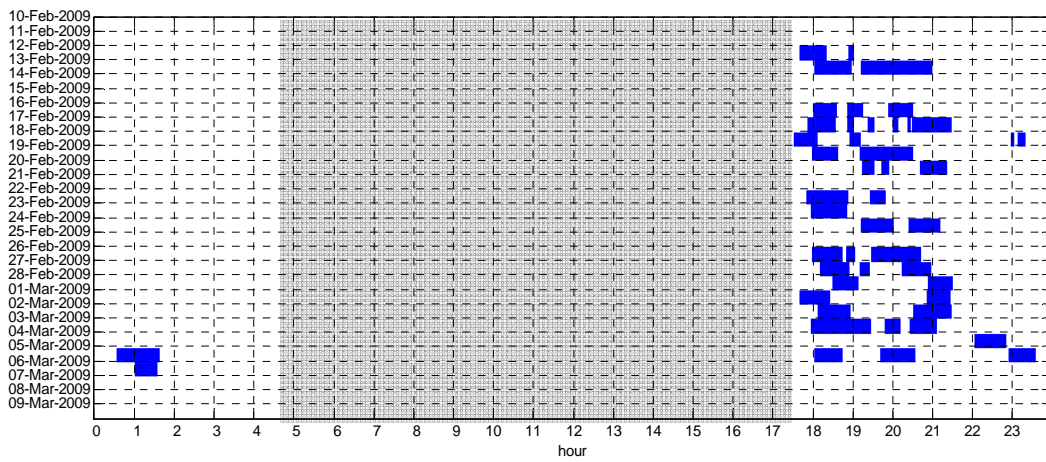
The echosounders were manually classified according to their main frequency into seven classes: 25, 28.8, 30, 33, 43, 50 and 80 kHz. The most frequent echosounders were the 50 kHz (covering over 50% of the total time analyzed and present every day, Table 3, figure 13C), the 30 kHz (being present about 15% of the total time, and registered for 70% of the days, Table 3, figure 13B) and the 28.8 kHz (present 6% of the hourly bins and in about 44% of days, Table 3, figure 13A). The 28.8 and 30 kHz echosounders were detected during daytime (figure 13A and 13B), whereas the 50 kHz echosounder was detected throughout the whole day (figure 13C).

Additionally, power spectral density plots over the frequency range show the contribution in amplitude of every echosounder type to the overall ocean noise (figure 14). In all cases there is a prominent peak at 50 kHz and in most cases another at 30 kHz, which speaks for the considerable contribution of those echosounder types to the overall noise, sometimes more than 10 dB in 80-hour averages.

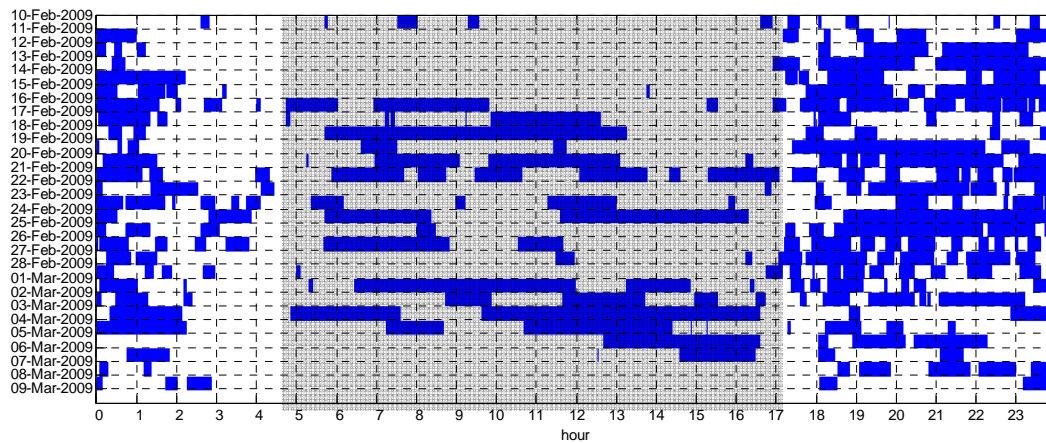
# Marine Mammal Recordings from the Hawaii Range Complex



A: Echosounder 28.8 kHz

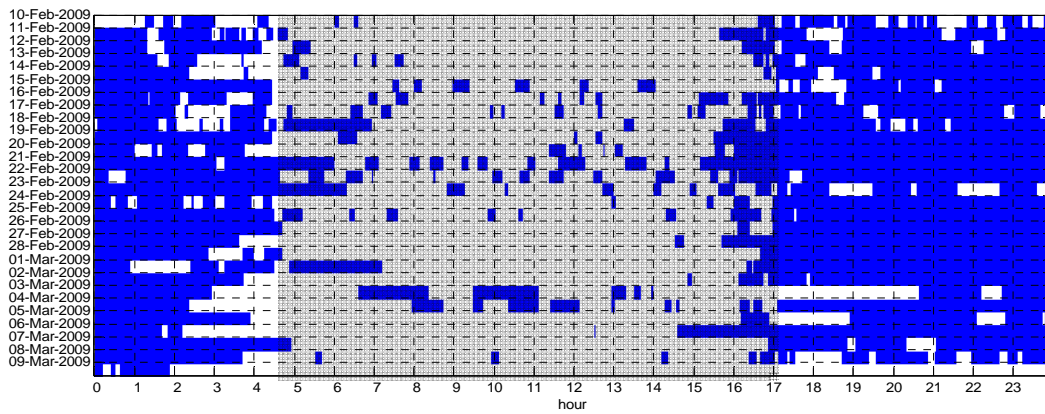


B: Echosounder 30 kHz



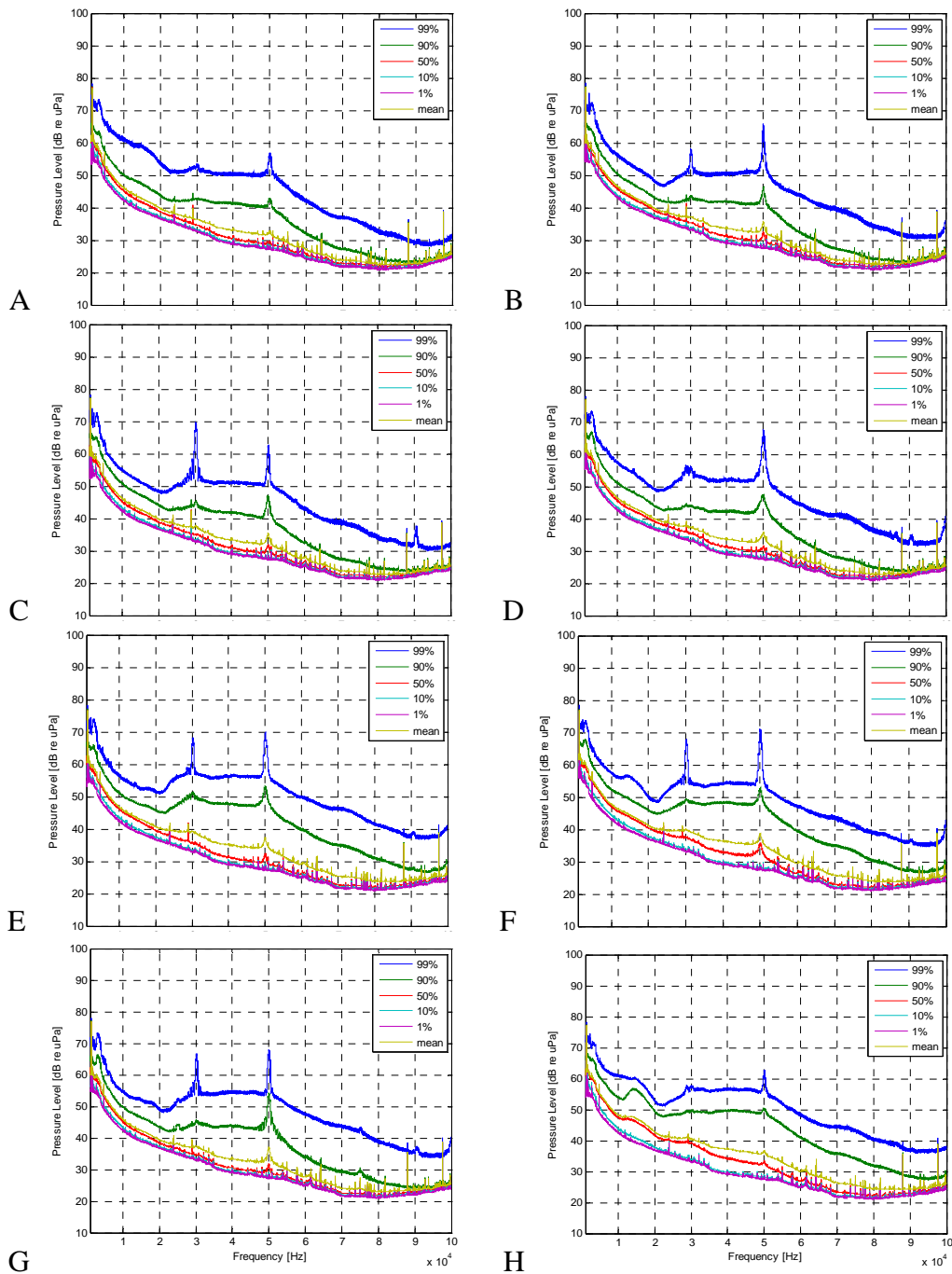
C: Echosounder 50 kHz

**Figure 13:** Manual detections of anthropogenic noise in Hawaii 05. A) Echosounders with main frequency at 28.8 kHz, B) Echosounders 30 kHz, C) Echosounders 50 kHz, and D) Ship engine noise.



D: Ship engine noise

**Figure 13 continued:** Manual detections of anthropogenic noise in Hawaii 05. A) Echosounders with main frequency at 28.8 kHz, B) Echosounders 30 kHz, C) Echosounders 50 kHz, and D) Ship engine noise.



**Figure 14:** Power spectral densities of 80 hours of recordings per plot. Different percentiles are depicted in color. Prominent peaks at 30 and 50 kHz of mainly the 99th and 90th percentile, corresponding to the contribution of echosounders to the overall ocean noise. In the plots C, D, E, F, and G there are smaller peaks at 90 kHz, being side band energy of the 30 kHz echosounder. Data from Hawaii 05 time period A) 2/9/2009, 0140 h – 2/13/2009, 0920 h, B) 2/13/2009, 0921 h – 2/16/2009,1844 h, C) 2/16/2009, 1845 h – 2/20/2009, 0730 h, D) 2/20/2009, 0731 h – 2/23/2009, 1331 h, E) 2/23/2009, 1332 h – 2/26/2009, 2255 h, F) 2/26/2009, 2256 h – 3/2/2009, 0819 h, G) 3/2/2009, 0820 h – 3/5/2009, 1742 h, and H) 3/5/2009, 1743 h – 3/9/2009, 0306 h.

## Acknowledgements

Funding for acoustic data analysis was provided to Scripps Institution of Oceanography by NAVFAC (Lori Mazzuca), PACFLT-Hawaii (Julie Rivers) and the Naval Postgraduate School (Curt Collins). CNO(N45) (Frank Stone) supported the HARP development and deployment. Funding for small-boat field work off the island of Hawaii was provided to Cascadia Research Collective by CNO(N45) (through the Southwest Fisheries Science Center), the Pacific Islands Fisheries Science Center, Office of Naval Research (through the University of Alaska Fairbanks/Alaska SeaLife Center), and the Wild Whale Research Foundation. Satellite tagging operations were supported by the U.S. Navy (through Woods Hole Oceanographic Institution), CNO(N45) (through the Southwest Fisheries Science Center, the Northwest Fisheries Science Center, the Wild Whale Research Foundation, and Dolphin Quest). HARP recoveries were supported by the Wild Whale Research Foundation.

## References

- Aschettino, J. M. (2010). "Population size and structure of melon-headed whales (*Peponocephala electra*) around the main Hawaiian Islands: evidence of multiple populations based on photographic data," *M.Sc. Thesis*, Hawai'i Pacific University. 117 pp.
- Baird, R. W., A. D. Ligon, S. K. Hooker, and A. M. Gorgone. (2001). "Sub-surface and night-time behaviour of pantropical spotted dolphins in Hawai'i," *Can. J. Zool.* **79**, 988-996.
- Baird, R. W., D. J. McSweeney, M. R. Heithaus and G. J. Marshall. (2003). "Short-finned pilot whale diving behavior: deep feeders and day-time socialites," *In: Abstracts of the 15th Biennial Conference on the Biology of Marine Mammals*, Greensboro, NC, December 2003.
- Baird, R. W., D. J. McSweeney, C. Bane, J. Barlow, D. R. Salden, L. K. Antoine, R. G. LeDuc, and D. L. Webster. (2006). "Killer whales in Hawaiian waters: information on population identity and feeding habits," *Pac. Sci.* **60**, 523-530.
- Baird, R. W., D. L. Webster, S. D. Mahaffy, D. J. McSweeney, G. S. Schorr and A. D. Ligon. (2008a). "Site fidelity and association patterns in a deep-water dolphin: rough-toothed dolphins (*Steno bredanensis*) in the Hawaiian Archipelago," *Mar. Mamm. Sci.* **24**, 535-553.
- Baird, R. W., A. M. Gorgone, D. J. McSweeney, D. L. Webster, D. R. Salden, M. H. Deakos, A. D. Ligon, G. S. Schorr, J. Barlow and S. D. Mahaffy. (2008b). "False killer whales (*Pseudorca crassidens*) around the main Hawaiian Islands: long-term site fidelity, inter-island movements, and association patterns," *Mar. Mamm. Sci.* **24**, 591-612.
- Baird, R. W., D. L. Webster, G. S. Schorr, D. J. McSweeney and J. Barlow. (2008c). "Diel variation in beaked whale diving behavior," *Mar. Mamm. Sci.* **24**, 630-642.

- Baird, R. W., A. M. Gorgone, D. J. McSweeney, A. D. Ligon, M. H. Deakos, D. L. Webster, G. S. Schorr, K. K. Martien, D. R. Salden, and S. D. Mahaffy. (2009). "Population structure of island-associated dolphins: evidence from photo-identification of common bottlenose dolphins (*Tursiops truncatus*) in the main Hawaiian Islands," *Mar. Mamm. Sci.* **25**, 251-274.
- Baird, R. W., G. S. Schorr, D. L. Webster, D. J. McSweeney, M. B. Hanson and R. D. Andrews. (2010). "Movements and habitat use of satellite-tagged false killer whales around the main Hawaiian Islands," *End. Species Res.* **10**, 107-121.
- Baumann-Pickering, S. (2009). "Species Identification and Measurement of Activity in Odontocete Species of Palmyra Atoll by Acoustic Monitoring," Doctorate thesis, Eberhard-Karls-Universität Tübingen, Tübingen, Germany. 100 pp.
- Baumann-Pickering, S., S. M. Wiggins, E. Roth, M. A. Roch, H.-U. Schnitzler, and J. A. Hildebrand. (2010). "Echolocation signals of a mesoplodont beaked whale at Palmyra Atoll," *J. Acoust. Soc. Am.* **127**, 3790-3799.
- Madsen, P. T., I. Kerr, and R. Payne. (2004). "Source parameter estimates of echolocation clicks from wild pygmy killer whales (*Feresa attenuata*)," *J. Acoust. Soc. Am.* **116**, 1909-1912.
- McDonald, M. A., J. A. Hildebrand, S. M. Wiggins, D. W. Johnston, and J. J. Polovina. (2009). "An acoustic survey of beaked whales at Cross Seamount near Hawaii," *J. Acoust. Soc. Am.* **125**, 624-627.
- McSweeney, D. J., R. W. Baird and S. D. Mahaffy. (2007). "Site fidelity, associations and movements of Cuvier's (*Ziphius cavirostris*) and Blainville's (*Mesoplodon densirostris*) beaked whales off the island of Hawai'i," *Mar. Mamm. Sci.* **23**, 666-687.
- McSweeney, D. J., R. W. Baird, S. D. Mahaffy, D. L. Webster, and G. S. Schorr. (2009). "Site fidelity and association patterns of a rare species: pygmy killer whales (*Feresa attenuata*) in the main Hawaiian Islands," *Mar. Mamm. Sci.* **25**, 557-572.
- Roch, M. A., M. S. Soldevilla, R. Hoenigman, S. M. Wiggins, and J. A. Hildebrand. (2008). "Comparison of machine learning techniques for the classification of echolocation clicks from three species of odontocetes," *Can. Acoust.* **36**, 41-47.
- Schorr, G. S., R. W. Baird, M. B. Hanson, D. L. Webster, D. J. McSweeney and R. D. Andrews. (2009a). "Movements of satellite-tagged Blainville's beaked whales off the island of Hawai'i," *End. Species Res.* **10**, 203-213.
- Schorr, G. S., R. W. Baird, D. L. Webster, D. J. McSweeney, M. B. Hanson, J. Polovina, and R. D. Andrews. (2009b). "Satellite tagging of melon-headed whales in Hawai'i reveals widely dispersed movement patterns," *Talk presented at: 18th Biennial Conference on the Biology of Marine Mammals, Quebec, October 2009.*
- Soldevilla, M. S., E. E. Henderson, G. S. Campbell, S. M. Wiggins, J. A. Hildebrand, and M. A. Roch. (2008). "Classification of Risso's and Pacific white-sided dolphins using spectral properties of echolocation clicks," *J. Acoust. Soc. Am.* **124**, 609-624.
- Wiggins, S. M., and J. A. Hildebrand. (2007). "High-frequency Acoustic Recording Package (HARP) for broad-band, long-term marine mammal monitoring," International Symposium on Underwater Technology 2007 and International Workshop on Scientific Use of Submarine Cables & Related Technologies 2007. Institute of Electrical and Electronics Engineers, Tokyo, Japan, pp. 551-557.

### Initial Distribution List

1.	Defense Technical Information Center 8725 John J. Kingman Rd., STE 0944 Ft. Belvoir, VA 22060-6218	2
2.	Dudley Knox Library, Code 013 Naval Postgraduate School Monterey, CA 93943-5100	2
3.	Erin Oleson National Marine Fisheries Service Pacific Islands Fisheries Science Center Honolulu, HI	1
4.	John Hildebrand Scripps Institution of Oceanography University of California La Jolla, CA	1
5.	John Calambokidis Cascadia Research Collective Olympia, WA	1
6.	Greg Schorr Cascadia Research Collective Olympia, WA	1
7.	Erin Falcone Cascadia Research Collective Olympia, WA	1
8.	Ching-Sang Chiu Naval Postgraduate School Monterey, CA	1
9.	Curtis A. Collins Naval Postgraduate School Monterey, CA	1
10.	Thomas A. Rago Naval Postgraduate School Monterey, CA	1
11.	Tetyana Margolina Naval Postgraduate School Monterey, CA	1

## Marine Mammal Recordings from the Hawaii Range Complex

---

12.	Chris Miller Naval Postgraduate School Monterey, CA	1
13.	John Joseph Naval Postgraduate School Monterey, CA	1
14.	Katherine Whitaker Pacific Grove, CA	1
15.	Frank Stone CNO(N45) Washington, D.C.	1
16.	Jay Barlow Southwest Fisheries Science Center, NOAA La Jolla, CA	1
17.	CAPT Ernie Young, USN (Ret.) CNO(N45) Washington, D.C.	1
18.	Dale Liechty CNO(N45) Washington, D.C.	1
19.	Dave Mellinger Oregon State University Newport, OR	1
20.	Kate Stafford Applied Physics Laboratory University of Washington Seattle, CA	1
21.	Sue Moore NOAA at Applied Physics Laboratory University of Washington Seattle, WA	1
22.	Petr Krysl University of California La Jolla, CA	1
23.	Mark McDonald Whale Acoustics Bellvue, CO	1

## Marine Mammal Recordings from the Hawaii Range Complex

---

24.	Ted Cranford San Diego State University San Diego, CA	1
25.	Monique Fargues Naval Postgraduate School Monterey, CA	1
26.	Mary Ann Daher Woods Hole Oceanographic Institution Woods Hole, MA	1
27.	Heidi Nevitt NAS North Island San Diego, CA	1
28.	Rebecca Stone Naval Postgraduate School Monterey, CA	1
29.	Melissa Hock Scripps Institution of Oceanography University of California La Jolla, CA	1
30.	Sean M. Wiggins Scripps Institution of Oceanography University of California La Jolla, CA	1
31.	E. Elizabeth Henderson Scripps Institution of Oceanography University of California La Jolla, CA	1
32.	Gregory S. Campbell Scripps Institution of Oceanography University of California La Jolla, CA	1
33.	Marie A. Roch San Diego State University San Diego, CA	1
34.	Anne Douglas Cascadia Research Collective Olympia, WA	1

## Marine Mammal Recordings from the Hawaii Range Complex

---

35.	Julie Rivers COMPACFLT Pearl Harbor, HI	1
36.	Jenny Marshall Naval Facilities Engineering Command San Diego, CA	1
37.	Chip Johnson COMPACFLT Pearl Harbor, HI	1
38.	CDR Len Remias U.S. Pacific Fleet Pearl Harbor, HI	1
39.	LCDR Robert S. Thompson U.S. Pacific Fleet Pearl Harbor, HI	1
40.	Jene J. Nissen U. S. Fleet Forces Command Norfolk, VA	1
41.	W. David Noble U. S. Fleet Forces Command Norfolk, VA	1
42.	David T. MacDuffee U. S. Fleet Forces Command Norfolk, VA	1
43.	Keith A. Jenkins Naval Facilities Engineering Command, Atlantic Norfolk, VA	1
44.	Joel T. Bell Naval Facilities Engineering Command, Atlantic Norfolk, VA	1
45.	Mandy L. Shoemaker Naval Facilities Engineering Command, Atlantic Norfolk, VA	1
46.	Anurag Kumar Naval Facilities Engineering Command, Atlantic Norfolk, VA	1

## Marine Mammal Recordings from the Hawaii Range Complex

---

47.	Merel Dalebout University of New South Wales Sydney, Australia	1
48.	Robin W. Baird Cascadia Research Collective Olympia, WA	1
49.	Brenda K. Rone National Marine Mammal Laboratory Seattle, WA	1
50.	Phil Clapham National Marine Mammal Laboratory Seattle, WA	1
51.	Laura J. Morse National Marine Mammal Laboratory Seattle, WA	1
52.	Anthony Martinez NOAA Southeast Fisheries Science Center Miami, FL	1
53.	Darlene R. Ketten Woods Hole Oceanographic Institution Woods Hole, MA	1
54.	David C. Mountain Boston University Boston, MA	1
55.	Melissa Soldevilla Duke University Durham, NC	1
56.	Brandon L. Southall Southall Environmental Associates, Inc. Santa Cruz, CA	1
57.	David Moretti NUWC Newport, RI	1
58.	Michael Weise Office of Naval Research, Code 32 Arlington, VA	1

## Marine Mammal Recordings from the Hawaii Range Complex

---

59.	Dan Costa University of California, Santa Cruz Santa Cruz, CA	1
60.	Lori Mazzuca Marine Mammal Research Consultants, Inc. Honolulu, HI	1
61.	Jim Eckman Office of Naval Research Arlington, VA	1
62.	Ari Friedlaender Duke University Beaufort, NC	1
63.	CAPT Robin Brake U.S. Navy Washington, DC	1
64.	Mary Grady Southwest Fisheries Science Center La Jolla, CA	1
65.	Lisa Ballance Southwest Fisheries Science Center La Jolla, CA	1
66.	Angela D'Amico SPAWAR San Diego, CA	1
67.	Amy Smith Science Applications International Corporation McLean, VA	1
68.	Peter Tyack Woods Hole Oceanographic Institution Woods Hole, MA	1
69.	Ian Boyd University of St. Andrews St. Andrews, Scotland, UK	1

## Marine Mammal Recordings from the Hawaii Range Complex

---

70.	Simone Baumann-Pickering Scripps Institution of Oceanography University of California La Jolla, CA	1
71.	Lisa K. Baldwin Scripps Institution of Oceanography University of California La Jolla, CA	1
72.	Anne E. Simonis Scripps Institution of Oceanography University of California La Jolla, CA	1
73.	Mariana L. Melcon Scripps Institution of Oceanography University of California La Jolla, CA	1
74.	Daniel L. Webster Cascadia Research Collective Olympia, WA	1
75.	Daniel J. McSweeney Wild Whale Research Foundation Holualoa, HI	1